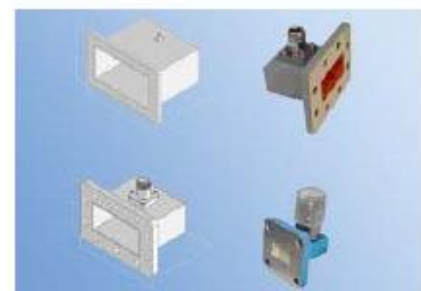
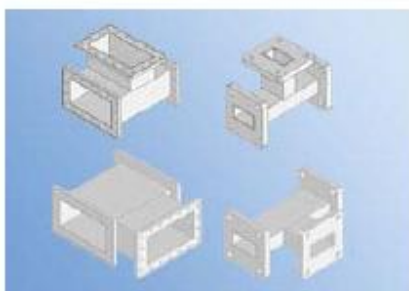
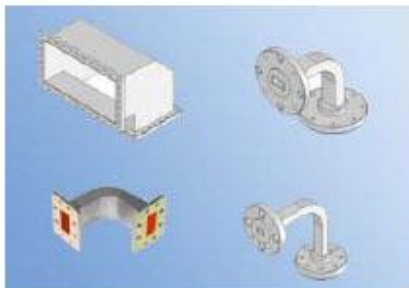
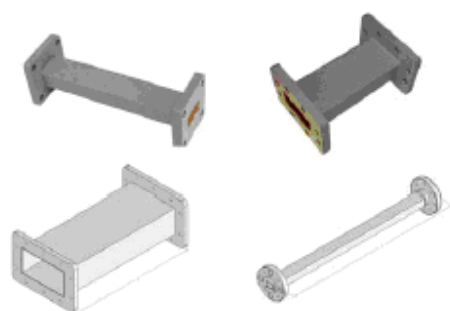


Waveguide Components

- Straight Waveguide
- Bend Waveguide
- Twist Waveguide
- Waveguide to Coaxial Adapter
- Waveguide Transition
- Waveguide Coupler
- Waveguide Tee
- Waveguide Joint
- Waveguide Dummy Load
- Waveguide Attenuator
- Waveguide Circulator
- Waveguide Isolator
- Electric Dual Ridge W/G Switch
- Waveguide Short Plates
- 1/4 Waveguide Offset Short
- Flexible Waveguide
- Flexible Twist Waveguide
- Elliptical Waveguide



Straight Waveguide



Standard Models

P/N	Frequency Range (GHz)	Waveguide	VSWR	Length (mm)	Flange	Material
975WAL-500	0.75-1.12	WR975	1.05	500	FDP9	Al
770WAL-500	0.96-1.45	WR770	1.05	500	FDP12	Al
650WAL-500	1.12-1.70	WR650	1.05	500	FDP14/FDM14	Al
510WAL-500	1.45-2.20	WR510	1.05	500	FDP18/FDM18	Al
430WAL-500	1.70-2.60	WR430	1.05	500	FDP22/FDM22	Al/Cu
340WAL-500	2.20-3.30	WR340	1.05	500	FDP26/FDM26	Al/Cu
284WAL-200	2.60-3.95	WR284	1.05	200	FDP32/FDM32	Al/Cu
229WAL-200	3.30-4.90	WR229	1.05	200	FDP40/FDM40	Al/Cu
187WAL-200	3.95-5.85	WR187	1.05	200	FDP48/FDM48	Al/Cu
159WAL-200	4.90-7.05	WR159	1.05	200	FDP58/FDM58	Al/Cu
137WAL-200	5.85-8.20	WR137	1.05	200	FDP70/FDM70	Al/Cu
112WAL-200	7.05-10.0	WR112	1.05	200	FBP84/FBM84/FBE84	Al/Cu
90WAL-100	8.20-12.4	WR90	1.05	100	FBP100/FBM100/FBE100	Al/Cu
75WAL-100	10.0-15.0	WR75	1.05	100	FBP120/FBM120/FBE120	Al/Cu
62WAL-100	12.4-18.0	WR62	1.05	100	FBP140/FBM140/FBE140	Al/Cu
51WAL-100	15.0-22.0	WR51	1.05	100	FBP180/FBM180/FBE180	Al/Cu
42WAL-100	18.0-26.5	WR42	1.05	100	FBP220/FBM220/FBE220	Al/Cu
34WAL-100	22.0-33.0	WR34	1.05	100	FBP260/FBM260/FBE260	Al/Cu
28WAL-100	26.5-40.0	WR28	1.05	100	FBP320/FBM320/FBE320	Al/Cu
22WAL-50	33.0-50.0	WR22	1.10	50	FUGP400	Cu
19WAL-50	40.0-60.0	WR19	1.10	50	FUGP500	Cu
15WAL-50	50.0-75.0	WR15	1.10	50	FUGP620	Cu
12WAL-50	60.0-90.0	WR12	1.10	50	FUGP740	Cu
10WAL-50	75.0-110.0	WR10	1.10	50	FUGP900	Cu

Ordering Information

P/N:

975 **WAL** - **L**
 WR Size Product Code Length (mm)

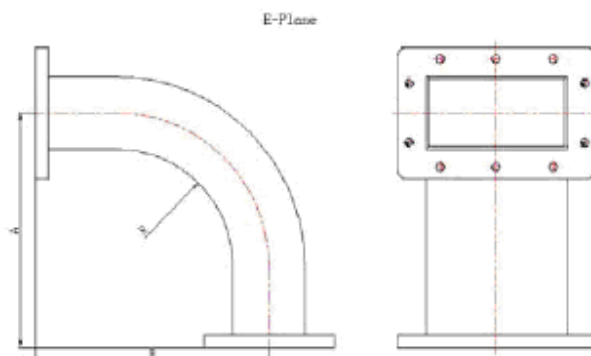
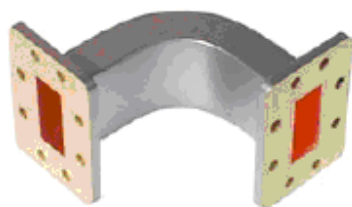
Example: 975WAL-500 is a WR975 straight waveguide. Length is 500mm.

AINFO manufactures wide variety of straight waveguide assemblies specially designed for every customers unique requirements.

Straight Waveguide can be assembled with many types of flange. We also offer many other special configurations, length and hole size to meet special requirements.

Note: Customization is available

Radius Bend Waveguide(90° E-Plane)



Standard Models

P/N	Frequency Range (GHz)	Waveguide	VSWR	Flange	Material
430WEB-190-190-95	1.70-2.60	WR430	1.15	FDP22/FDM22	Al/Cu
340WEB-100-100-40	2.20-3.30	WR340	1.15	FDP26/FDM26	Al/Cu
284WEB-100-100-40	2.60-3.95	WR284	1.15	FDP32/FDM32	Al/Cu
229WEB-80-80-40	3.30-4.90	WR229	1.15	FDP40/FDM40	Al/Cu
187WEB-80-80-40	3.95-5.85	WR187	1.15	FDP48/FDM48	Al/Cu
159WEB-80-80-40	4.90-7.05	WR159	1.15	FDP58/FDM58	Al/Cu
137WEB-60-60-30	5.85-8.20	WR137	1.15	FDP70/FDM70	Al/Cu
112WEB-50-50-25	7.05-10.0	WR112	1.15	FBP84/FBM84/FBE84	Al/Cu
90WEB-40-40-20	8.20-12.4	WR90	1.15	FBP100/FBM100/FBE100	Al/Cu
75WEB-40-40-20	10.0-15.0	WR75	1.15	FBP120/FBM120/FBE120	Al/Cu
62WEB-40-40-20	12.4-18.0	WR62	1.15	FBP140/FBM140/FBE140	Al/Cu
51WEB-30-30-15	15.0-22.0	WR51	1.15	FBP180/FBM180/FBE180	Al/Cu
42WEB-30-30-15	18.0-26.5	WR42	1.15	FBP220/FBM220/FBE220	Al/Cu
34WEB-30-30-15	22.0-33.0	WR34	1.15	FBP260/FBM260/FBE260	Al/Cu
28WEB-25-25-10	26.5-40.0	WR28	1.15	FBP320/FBM320/FBE320	Al/Cu
22WEB-25-25-10	33.0-50.0	WR22	1.15	FUGP400	Cu
19WEB-25-25-10	40.0-60.0	WR19	1.15	FUGP500	Cu
15WEB-20-20-10	50.0-75.0	WR15	1.15	FUGP620	Cu
12WEB-20-20-10	60.0-90.0	WR12	1.15	FUGP740	Cu
10WEB-20-20-10	75.0-110.0	WR10	1.15	FUGP900	Cu

Ordering Information

P/N:

430 **WEB** - **A** - **B** - **R**
 WR Product Size A Size B Size R
 Size Code (mm) (mm) (mm)

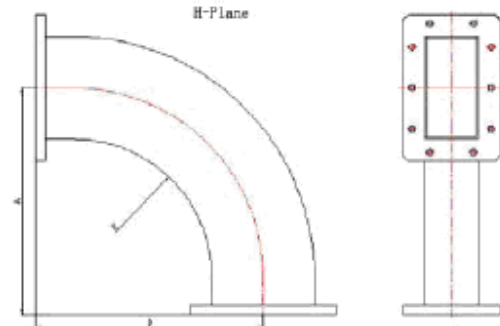
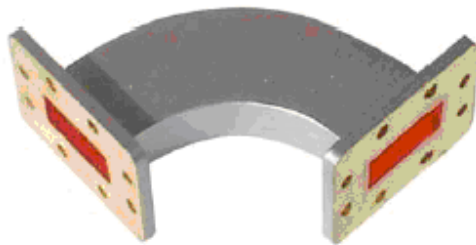
Example: 430WEB-190-190-95 is a WR430 90° E-Plane Radius Bend Waveguide. Size A is 190mm, B is 190mm, R is 95mm.

AINFO manufactures wide variety of radius bend waveguide assemblies specially designed for every customers unique requirements.

Radius Bend Waveguide can be assembled with many types of flange. Basic styles in bend include miter and radius 90° bends, acute and obtuse E-plane and H-plane bends in angles from 30° to 180°.

Note: Customization is available

Radius Bend Waveguide(90° H-Plane)



Standard Models

P/N	Frequency Range (GHz)	Waveguide	VSWR	Flange	Material
430WHB-250-250-152	1.70-2.60	WR430	1.15	FDP22/FDM22	Al/Cu
340WHB-180-180-100	2.20-3.30	WR340	1.15	FDP26/FDM26	Al/Cu
284WHB-160-160-100	2.60-3.95	WR284	1.15	FDP32/FDM32	Al/Cu
229WHB-120-120-78	3.30-4.90	WR229	1.15	FDP40/FDM40	Al/Cu
187WHB-80-80-40	3.95-5.85	WR187	1.15	FDP48/FDM48	Al/Cu
159WHB-80-80-40	4.90-7.05	WR159	1.15	FDP58/FDM58	Al/Cu
137WHB-80-80-50	5.85-8.20	WR137	1.15	FDP70/FDM70	Al/Cu
112WHB-60-60-35	7.05-10.0	WR112	1.15	FBP84/FBM84/FBE84	Al/Cu
90WHB-55-55-35	8.20-12.4	WR90	1.15	FBP100/FBM100/FBE100	Al/Cu
75WHB-45-45-30	10.0-15.0	WR75	1.15	FBP120/FBM120/FBE120	Al/Cu
62WHB-40-40-25	12.4-18.0	WR62	1.15	FBP140/FBM140/FBE140	Al/Cu
51WHB-35-35-20	15.0-22.0	WR51	1.15	FBP180/FBM180/FBE180	Al/Cu
42WHB-35-35-20	18.0-26.5	WR42	1.15	FBP220/FBM220/FBE220	Al/Cu
34WHB-35-35-20	22.0-33.0	WR34	1.15	FBP260/FBM260/FBE260	Al/Cu
28WHB-30-30-15	26.5-40.0	WR28	1.15	FBP320/FBM320/FBE320	Al/Cu
22WHB-20-20-10	33.0-50.0	WR22	1.15	FUGP400	Cu
19WHB-25-25-10	40.0-60.0	WR19	1.15	FUGP500	Cu
15WHB-25-25-10	50.0-75.0	WR15	1.15	FUGP620	Cu
12WHB-25-25-10	60.0-90.0	WR12	1.15	FUGP740	Cu
10WHB-25-25-10	75.0-110.0	WR10	1.15	FUGP900	Cu

Ordering Information

P/N:

430 **WHB** - **A** - **B** - **R**
 WR Product Size A Size B Size R
 Size Code (mm) (mm) (mm)

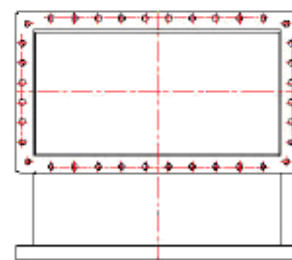
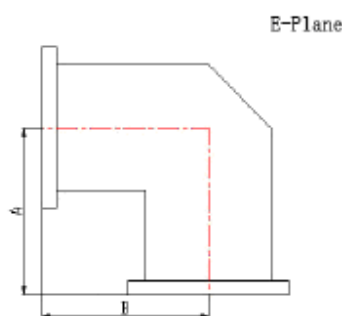
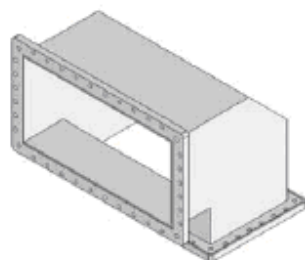
Example: 430WHB-250-250-152 is a WR430 90° H-Plane Radius Bend Waveguide. Size A is 250mm, B is 250mm, R is 152mm.

AINFO manufactures wide variety of radius bend waveguide assemblies specially designed for every customers unique requirements.

Radius Bend Waveguide can be assembled with many types of flange. Basic styles in bend include miter and radius 90° bends, acute and obtuse E-plane and H-plane bends in angles from 30° to 180°.

Note: Customization is available

Miter Bend Waveguide (90° E-Plane)



Standard Models

P/N	Frequency Range (GHz)	Waveguide	VSWR	Flange	Material
975WTEB-150-150	0.75-1.12	WR975	1.15	FDP9	Al
770WTEB-100-100	0.96-1.45	WR770	1.15	FDP12	Al
650WTEB-100-100	1.12-1.70	WR650	1.15	FDP14/FDM14	Al
510WTEB-80-80	1.45-2.20	WR510	1.15	FDP18/FDM18	Al/Cu
430WTEB-80-80	1.70-2.60	WR430	1.15	FDP22/FDM22	Al/Cu
340WTEB-60-60	2.20-3.30	WR340	1.15	FDP26/FDM26	Al/Cu
284WTEB-50-50	2.60-3.95	WR284	1.15	FDP32/FDM32	Al/Cu
229WTEB-40-40	3.30-4.90	WR229	1.15	FDP40/FDM40	Al/Cu
187WTEB-40-40	3.95-5.85	WR187	1.15	FDP48/FDM48	Al/Cu
159WTEB-40-40	4.90-7.05	WR159	1.15	FDP58/FDM58	Al/Cu
137WTEB-30-30	5.85-8.20	WR137	1.15	FDP70/FDM70	Al/Cu
112WTEB-25-25	7.05-10.0	WR112	1.15	FBP84/FBM84/FBE84	Al/Cu
90WTEB-20-20	8.20-12.4	WR90	1.15	FBP100/FBM100/FBE100	Al/Cu
75WTEB-20-20	10.0-15.0	WR75	1.15	FBP120/FBM120/FBE120	Al/Cu
62WTEB-20-20	12.4-18.0	WR62	1.15	FBP140/FBM140/FBE140	Al/Cu
51WTEB-20-20	15.0-22.0	WR51	1.15	FBP180/FBM180/FBE180	Al/Cu
42WTEB-20-20	18.0-26.5	WR42	1.15	FBP220/FBM220/FBE220	Al/Cu
34WTEB-20-20	22.0-33.0	WR34	1.15	FBP260/FBM260/FBE260	Al/Cu
28WTEB-15-15	26.5-40.0	WR28	1.15	FBP320/FBM320/FBE320	Al/Cu

Ordering Information

P/N:

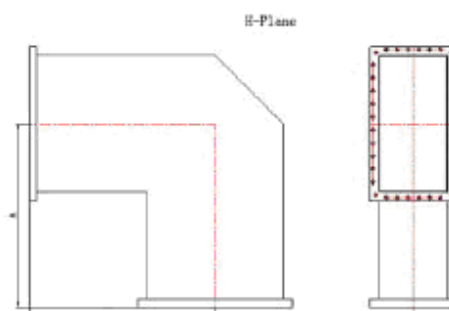
340 **WTEB** - **A** - **B**
 WR Size Product Code Size A (mm) Size B (mm)

Example: 340WTEB-60-60 is a WR340 90° E-Plane Miter Bend Waveguide. Size A is 60mm, B is 60mm.

AINFO manufactures wide variety of miter bend waveguide assemblies specially designed for every customers unique requirements. Miter Bend Waveguide can be assembled with many types of flange. Basic styles in bend include miter and radius 90° bends.

Note: Customization is available

Miter Bend Waveguide (90° H-Plane)



Standard Models

P/N	Frequency Range (GHz)	Waveguide	VSWR	Flange	Material
975WTHB-250-250	0.75-1.12	WR975	1.15	FDP9	Al
770WTHB-200-200	0.96-1.45	WR770	1.15	FDP12	Al
650WTHB-180-180	1.12-1.70	WR650	1.15	FDP14/FDM14	Al
510WTHB-150-150	1.45-2.20	WR510	1.15	FDP18/FDM18	Al/Cu
430WTHB-80-80	1.70-2.60	WR430	1.15	FDP22/FDM22	Al/Cu
340WTHB-60-60	2.20-3.30	WR340	1.15	FDP26/FDM26	Al/Cu
284WTHB-50-50	2.60-3.95	WR284	1.15	FDP32/FDM32	Al/Cu
229WTHB-40-40	3.30-4.90	WR229	1.15	FDP40/FDM40	Al/Cu
187WTHB-40-40	3.95-5.85	WR187	1.15	FDP48/FDM48	Al/Cu
159WTHB-40-40	4.90-7.05	WR159	1.15	FDP58/FDM58	Al/Cu
137WTHB-30-30	5.85-8.20	WR137	1.15	FDP70/FDM70	Al/Cu
112WTHB-25-25	7.05-10.0	WR112	1.15	FBP84/FBM84/FBE84	Al/Cu
90WTHB-20-20	8.20-12.4	WR90	1.15	FBP100/FBM100/FBE100	Al/Cu
75WTHB-20-20	10.0-15.0	WR75	1.15	FBP120/FBM120/FBE120	Al/Cu
62WTHB-20-20	12.4-18.0	WR62	1.15	FBP140/FBM140/FBE140	Al/Cu
51WTHB-20-20	15.0-22.0	WR51	1.15	FBP180/FBM180/FBE180	Al/Cu
42WTHB-20-20	18.0-26.5	WR42	1.15	FBP220/FBM220/FBE220	Al/Cu
34WTHB-20-20	22.0-33.0	WR34	1.15	FBP260/FBM260/FBE260	Al/Cu
28WTHB-15-15	26.5-40.0	WR28	1.15	FBP320/FBM320/FBE320	Al/Cu

Ordering Information

P/N:

340 **WTHB** - **A** - **B**
 WR Size Product Code Size A (mm) Size B (mm)

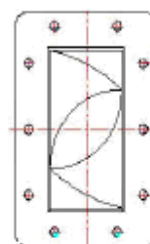
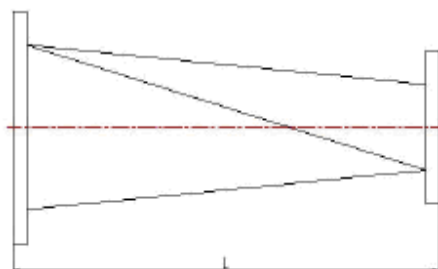
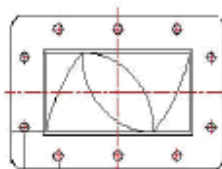
Example: 340WTHB-60-60 is a WR340 90° H-Plane Miter Bend Waveguide. Size A is 60mm, B is 60mm.

AINFO manufactures wide variety of miter bend waveguide assemblies specially designed for every customers unique requirements.

Miter Bend Waveguide can be assembled with many types of flange. The available materials include brass and aluminum. Basic styles in bend include miter and radius 90° bends.

Note: Customization is available

Twist Waveguide



Standard Models						
P/N	Frequency Range (GHz)	Waveguide	VSWR	Length (mm)	Flange	Material
430WTA-800	1.70-2.60	WR430	1.10	800	FDP22/FDM22	Al/Cu
340WTA-500	2.20-3.30	WR340	1.10	500	FDP26/FDM26	Al/Cu
284WTA-300	2.60-3.95	WR284	1.10	300	FDP32/FDM32	Al/Cu
229WTA-250	3.30-4.90	WR229	1.10	250	FDP40/FDM40	Al/Cu
187WTA-200	3.95-5.85	WR187	1.10	200	FDP48/FDM48	Al/Cu
159WTA-200	4.90-7.05	WR159	1.10	200	FDP58/FDM58	Al/Cu
137WTA-150	5.85-8.20	WR137	1.10	150	FDP70/FDM70	Al/Cu
112WTA-120	7.05-10.0	WR112	1.10	120	FBP84/FBM84/FBE84	Al/Cu
90WTA-100	8.20-12.4	WR90	1.10	100	FBP100/FBM100/FBE100	Al/Cu
75WTA-90	10.0-15.0	WR75	1.10	90	FBP120/FBM120/FBE120	Al/Cu
62WTA-75	12.4-18.0	WR62	1.10	75	FBP140/FBM140/FBE140	Al/Cu
51WTA-70	15.0-22.0	WR51	1.10	70	FBP180/FBM180/FBE180	Al/Cu
42WTA-60	18.0-26.5	WR42	1.10	60	FBP220/FBM220/FBE220	Al/Cu
34WTA-55	22.0-33.0	WR34	1.10	55	FBP260/FBM260/FBE260	Al/Cu
28WTA-55	26.5-40.0	WR28	1.10	55	FBP320/FBM320/FBE320	Al/Cu
22WTA-50	33.0-50.0	WR22	1.10	50	FUGP400	Cu
19WTA-50	40.0-60.0	WR19	1.10	50	FUGP500	Cu
15WTA-50	50.0-75.0	WR15	1.10	50	FUGP620	Cu
12WTA-50	60.0-90.0	WR12	1.10	50	FUGP740	Cu
10WTA-50	75.0-110.0	WR10	1.10	50	FUGP900	Cu

Ordering Information

P/N:

284 **WTA** - **L**
 WR Size Product Code Length (mm)

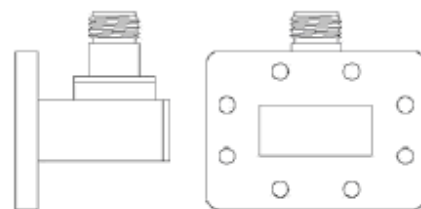
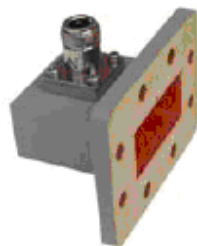
Example: 284WTA-300 is a WR284 twist waveguide. Length is 300mm.

AINFO manufactures wide variety of twist waveguide assemblies specially designed for every customers unique requirements.

Twist Waveguide can be assembled with many types of flange. We also offer many other special configurations, length and hole size to meet special requirements.

Note: Customization is available

Right Angle Waveguide to Coaxial Adapter



Standard Models

P/N	Frequency Range (GHz)	Waveguide	VSWR	Flange	Connector	Material
975WCAN	0.75-1.12	WR975	1.25	FDP9	N-F	Al
770WCAN	0.96-1.45	WR770	1.25	FDP12	N-F	Al
650WCAN	1.12-1.70	WR650	1.25	FDP14/FDM14	N-F	Al
510WCAN	1.45-2.20	WR510	1.25	FDP18/FDM18	N-F	Al
430WCAN	1.70-2.60	WR430	1.25	FDP22/FDM22	N-F	Al
340WCAN	2.20-3.30	WR340	1.25	FDP26/FDM26	N-F	Al/Cu
284WCAN	2.60-3.95	WR284	1.25	FDP32/FDM32	N-F	Al/Cu
229WCAN	3.30-4.90	WR229	1.25	FDP40/FDM40	N-F	Al/Cu
187WCAN	3.95-5.85	WR187	1.25	FDP48/FDM48	N-F	Al/Cu
159WCAN	4.90-7.05	WR159	1.25	FDP58/FDM58	N-F	Al/Cu
137WCAN	5.85-8.20	WR137	1.25	FDP70/FDM70	N-F	Al/Cu
137WCAS	5.85-8.20	WR137	1.25	FDP70/FDM70	SMA-F	Al/Cu
112WCAN	7.05-10.0	WR112	1.25	FBP84/FBM84/FBE84	N-F	Al/Cu
112WCAS	7.05-10.0	WR112	1.25	FBP84/FBM84/FBE84	SMA-F	Al/Cu
90WCAN	8.20-12.4	WR90	1.25	FBP100/FBM100/FBE100	N-F	Al/Cu
90WCAS	8.20-12.4	WR90	1.25	FBP100/FBM100/FBE100	SMA-F	Al/Cu
75WCAN	10.0-15.0	WR75	1.25	FBP120/FBM120/FBE120	N-F	Al/Cu
75WCAS	10.0-15.0	WR75	1.25	FBP120/FBM120/FBE120	SMA-F	Al/Cu
62WCAS	12.4-18.0	WR62	1.25	FBP140/FBM140/FBE140	SMA-F	Al/Cu
51WCAS	15.0-22.0	WR51	1.25	FBP180/FBM180/FBE180	SMA-F	Al/Cu
42WCAS	18.0-26.5	WR42	1.30	FBP220/FBM220/FBE220	SMA-F	Al/Cu
34WCAS	22.0-33.0	WR34	1.50	FBP260/FBM260/FBE260	SMA-F	Al/Cu
28WCAK	26.5-40.0	WR28	1.50	FBP320/FBM320/FBE320	2.92K-F	Al/Cu
22WCA2.4	33.0-50.0	WR22	1.50	FUGP400	2.4mm-F	Cu
19WCAV	40.0-60.0	WR19	1.50	FUGP500	1.85mm-F	Cu

Ordering Information

P/N:

229

WR Size

WCAN

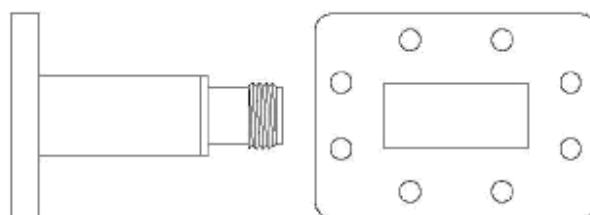
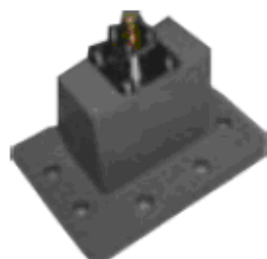
Product Code

Example: 229WCAN is a WR229 waveguide to coaxial adapter(N type Female connector).

AINFO manufactures wide variety of right angle waveguide to coaxial adapter assemblies specially designed for every customers unique requirements. Right Angle Waveguide to Coaxial Adapter can be assembled with many types of flange. We also offer many other special configurations, length and hole size to meet special requirements.

Note: Customization is available

Endlaunch Waveguide to Coaxial Adapter



Standard Models						
P/N	Frequency Range (GHz)	Waveguide	VSWR	Flange	Connector	Material
430WECAN	1.70-2.60	WR430	1.25	FDP22/FDM22	N-F	Al
340WECAN	2.20-3.30	WR340	1.25	FDP26/FDM26	N-F	Al/Cu
340WECAS	2.20-3.30	WR340	1.25	FDP26/FDM26	SMA-F	Al/Cu
284WECAN	2.60-3.95	WR284	1.25	FDP32/FDM32	N-F	Al/Cu
284WECAS	2.60-3.95	WR284	1.25	FDP32/FDM32	SMA-F	Al/Cu
229WECAN	3.30-4.90	WR229	1.25	FDP40/FDM40	N-F	Al/Cu
229WECAS	3.30-4.90	WR229	1.25	FDP40/FDM40	SMA-F	Al/Cu
187WECAN	3.95-5.85	WR187	1.25	FDP48/FDM48	N-F	Al/Cu
187WECAS	3.95-5.85	WR187	1.25	FDP48/FDM48	SMA-F	Al/Cu
159WECAN	4.90-7.05	WR159	1.25	FDP58/FDM58	N-F	Al/Cu
159WECAS	4.90-7.05	WR159	1.25	FDP58/FDM58	SMA-F	Al/Cu
137WECAN	5.85-8.20	WR137	1.25	FDP70/FDM70	N-F	Al/Cu
137WECAS	5.85-8.20	WR137	1.25	FDP70/FDM70	SMA-F	Al/Cu
112WECAN	7.05-10.0	WR112	1.25	FBP84/FBM84/FBE84	N-F	Al/Cu
112WECAS	7.05-10.0	WR112	1.25	FBP84/FBM84/FBE84	SMA-F	Al/Cu
90WECAN	8.20-12.4	WR90	1.25	FBP100/FBM100/FBE100	N-F	Al/Cu
90WECAS	8.20-12.4	WR90	1.25	FBP100/FBM100/FBE100	SMA-F	Al/Cu
75WECAN	10.0-15.0	WR75	1.25	FBP120/FBM120/FBE120	N-F	Al/Cu

Ordering Information

P/N:

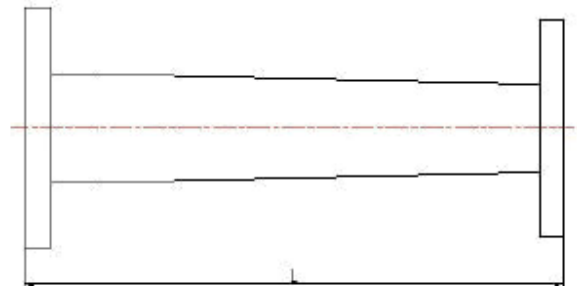
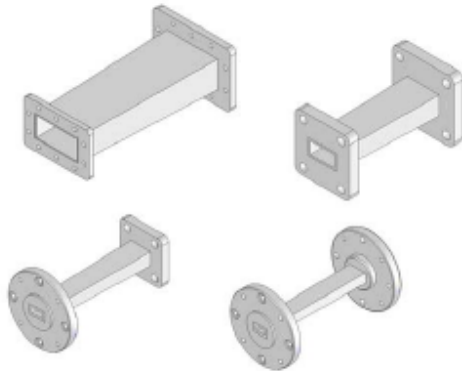
187 **WECAN**
WR Product
Size Code

Example: 187WECAN is a WR187 endlaunch waveguide to coaxial adapter(N type Female connector).

AINFO manufactures wide variety of endlaunch waveguide to coaxial adapter assemblies specially designed for every customers unique requirements. Endlaunch Waveguide to Coaxial Adapter can be assembled with many types of flange. We also offer many other special configurations, length and hole size to meet special requirements.

Note: Customization is available

Waveguide Transition



Standard Models					
P/N	Frequency Range (GHz)	Waveguide	VSWR	Insertion Loss (dB)	Flange
340284WA-200	2.60-3.30	WR340 to WR284	1.10	0.2	WR340: FDP26/FDM26 WR284: FDP32/FDM32
284229WA-200	3.30-3.95	WR284 to WR229	1.10	0.2	WR284: FDP32/FDM32 WR229:FDP40/FDM40
229187WA-180	3.95-4.90	WR229 to WR187	1.10	0.2	WR229:FDP40/FDM40 WR187:FDP48/FDP48
187159WA-180	4.90-5.85	WR187 to WR159	1.10	0.2	WR187:FDP48/FDP48 WR159:FDP58/FDM58
159137WA-150	5.85-7.05	WR159 to WR137	1.10	0.2	WR159:FDP58/FDM58 WR137:FDP70/FDM70
137112WA-130	7.05-8.20	WR137 to WR112	1.10	0.2	WR137:FDP70/FDM70 WR112: FDP84/FDM84
11290WA-100	8.20-10.0	WR112 to WR90	1.10	0.2	WR112:FBP84/FBM84/FBE84 WR90:FBP100/FBM100/FBE100
9075WA-80	10.0-12.4	WR90 to WR75	1.10	0.2	WR90:FBP100/FBM100/FBE100 WR75:FBP120/FBM120/FBE120
7562WA-75	12.4-15.0	WR75 to WR62	1.10	0.2	WR75:FBP120/FBM120/FBE120 WR62:FBP140/FBM140/FBE140
6251WA-60	15.0-18.0	WR62 to WR51	1.10	0.2	WR62:FBP140/FBM140/FBE140 WR51:FBP180/FBM180/FBE180
5142WA-50	18.0-22.0	WR51 to WR42	1.10	0.2	WR51:FBP180/FBM180/FBE180 WR42:FBP220/FBM220/FBE220
4234WA-50	22.0-26.5	WR42 to WR34	1.10	0.2	WR42:FBP220/FBM220/FBE220 WR34:FBP260/FBM260/FBE260

Waveguide Transition

P/N	Frequency Range (GHz)	Waveguide	VSWR	Insertion Loss (dB)	Flange
3428WA-50	26.5-33.0	WR34 to WR28	1.10	0.2	WR34:FBP260/FBM260/FBE260 WR28:FBP320/FBM320/FBE320
2822WA-50	33.0-40.0	WR28 to WR22	1.10	0.2	WR28:FBP320/FBM320/FBE320 WR22: FUGP400
2219WA-50	40.0-50.0	WR22 to WR19	1.10	0.2	WR22:FUGP400 WR19:FUGP500
1915WA-50	50.0-60.0	WR19 to WR15	1.10	0.2	WR19:FUGP500 WR15:FUGP620
1512WA-50	60.0-75.0	WR15 to WR12	1.10	0.2	WR15:FUGP620 WR12:FUGP740
1210WA-50	75.0-90.0	WR12 to WR10	1.10	0.2	WR12:FUGP740 WR10:FUGP900

Ordering Information

P/N:

229

187

WA

-

L

WR Size

WR Size

Product Code

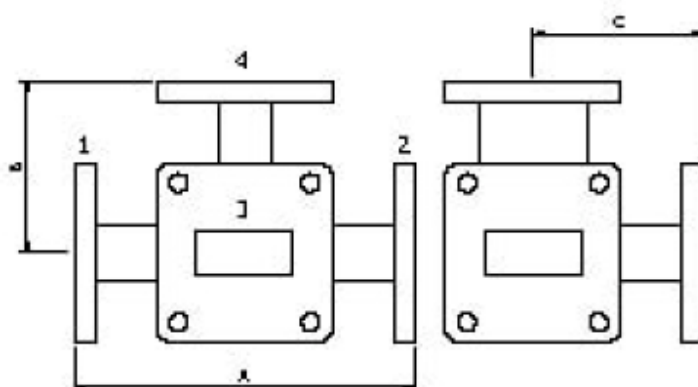
Length (mm)

Example: 229187WA-180 is a WR229 to WR187 waveguide transition. Length is 180mm.

AINFO manufactures wide variety of waveguide transition assemblies specially designed for every customers unique requirements. Waveguide Transition can be assembled with many types of flange. We also offer many other special configurations, length and hole size to meet special requirements.

Note: Customization is available

Waveguide Magic Tee



Standard Models

P/N	Frequency Range (GHz)	Waveguide	Band Width	Unbalance (dB)	VSWR H-Plane	VSWR E-Plane	Isolation (dB)	Flange	Material
430WMT	1.70-2.60	WR430	10%-20%	±0.40	1.30	1.50	30	FDP22/ FDM22	Al/Cu
340WMT	2.20-3.30	WR340	10%-20%	±0.40	1.30	1.50	30	FDP26/ FDM26	Al/Cu
284WMT	2.60-3.95	WR284	10%-20%	±0.40	1.30	1.50	30	FDP32/ FDM32	Al/Cu
229WMT	3.30-4.90	WR229	10%-20%	±0.40	1.30	1.30	30	FDP40/ FDM40	Al/Cu
187WMT	3.95-5.85	WR187	10%-20%	±0.40	1.30	1.30	30	FDP48/ FDM48	Al/Cu
159WMT	4.90-7.05	WR159	10%-20%	±0.40	1.30	1.30	30	FDP58/ FDM58	Al/Cu
137WMT	5.85-8.20	WR137	10%-20%	±0.40	1.30	1.30	30	FDP70/ FDM70	Al/Cu
112WMT	7.05-10.0	WR112	10%-20%	±0.40	1.30	1.30	30	FBP84/ FBM84/ FBE84	Al/Cu
90WMT	8.20-12.4	WR90	10%-20%	±0.40	1.30	1.30	30	FBP100/ FBM100/ FBE100	Al/Cu
75WMT	10.0-15.0	WR75	10%-20%	±0.40	1.30	1.30	30	FBP120/ FBM120/ FBE120	Al/Cu
62WMT	12.4-18.0	WR62	10%-20%	±0.40	1.30	1.50	30	FBP140/ FBM140/ FBE140	Al/Cu
51WMT	15.0-22.0	WR51	10%-20%	±0.40	1.30	1.50	30	FBP180/ FBM180/ FBE180	Al/Cu
42WMT	18.0-26.5	WR42	10%-20%	±0.40	1.30	1.50	30	FBP220/ FBM220/ FBE220	Al/Cu
34WMT	22.0-33.0	WR34	10%-20%	±0.40	1.30	1.50	30	FBP260/ FBM260/ FBE260	Al/Cu

Waveguide Magic Tee

P/N	Frequency Range (GHz)	Waveguide	Band Width	Unbalance (dB)	VSWR H-Plane	VSWR E-Plane	Isolation (dB)	Flange	Material
28WMT	26.5-40.0	WR28	10%-20%	±0.40	1.30	1.50	30	FBP320/ FBM320/ FBE320	Al/Cu

Ordering Information

P/N:

51 **WMT**
 WR Product
 Size Code

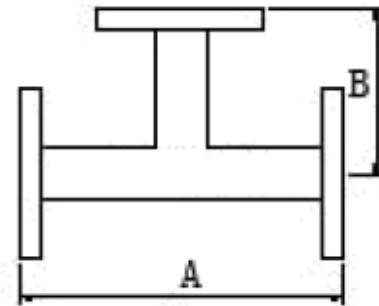
Example:51WMT is a WR51 waveguide magic tee.

AINFO manufactures wide variety of waveguide magic tee assemblies specially designed for every customers unique requirements.

Waveguide Magic Tee can be assembled with many types of flange. We also offer many other special configurations, length and hole size to meet special requirements.

Note: Customization is available

Waveguide ET



Standard Models

P/N	Frequency Range (GHz)	Waveguide	Band Width	Unbalance (dB)	VSWR	Flange	Material
650WET	1.12-1.70	WR650	10%-20%	±0.25	1.50	FDP14/FDM14	Al
510WET	1.45-2.20	WR510	10%-20%	±0.25	1.50	FDP18/FDM18	Al
430WET	1.70-2.60	WR430	10%-20%	±0.25	1.50	FDP22/FDM22	Al/Cu
340WET	2.20-3.30	WR340	10%-20%	±0.25	1.50	FDP26/FDM26	Al/Cu
284WET	2.60-3.95	WR284	10%-20%	±0.25	1.50	FDP32/FDM32	Al/Cu
229WET	3.30-4.90	WR229	10%-20%	±0.25	1.50	FDP40/FDM40	Al/Cu
187WET	3.95-5.85	WR187	10%-20%	±0.25	1.50	FDP48/FDM48	Al/Cu
159WET	4.90-7.05	WR159	10%-20%	±0.25	1.50	FDP58/FDM58	Al/Cu
137WET	5.85-8.20	WR137	10%-20%	±0.25	1.50	FDP70/FDM70	Al/Cu
112WET	7.05-10.0	WR112	10%-20%	±0.25	1.50	FBP84/FBM84/FBE84	Al/Cu
90WET	8.20-12.4	WR90	10%-20%	±0.25	1.50	FBP100/FBM100/FBE100	Al/Cu
75WET	10.0-15.0	WR75	10%-20%	±0.25	1.50	FBP120/FBM120/FBE120	Al/Cu
62WET	12.4-18.0	WR62	10%-20%	±0.25	1.50	FBP140/FBM140/FBE140	Al/Cu
51WET	15.0-22.0	WR51	10%-20%	±0.25	1.50	FBP180/FBM180/FBE180	Al/Cu
42WET	18.0-26.5	WR42	10%-20%	±0.30	1.50	FBP220/FBM220/FBE220	Al/Cu
34WET	22.0-33.0	WR34	10%-20%	±0.30	1.50	FBP260/FBM260/FBE260	Al/Cu
28WET	26.5-40.0	WR28	10%-20%	±0.30	1.50	FBP320/FBM320/FBE320	Al/Cu

Ordering Information

P/N:

42

WR Size

WET

Product Code

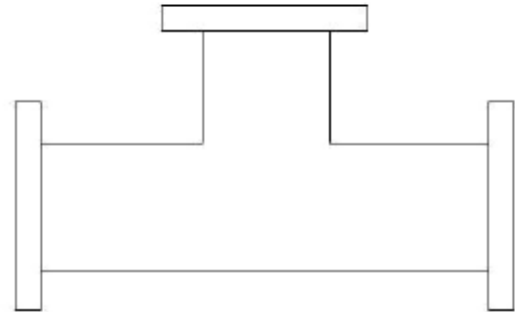
Example: 42WET is a WR42 waveguide ET.

AINFO manufactures wide variety of waveguide ET assemblies specially designed for every customers unique requirements.

Waveguide ET can be assembled with many types of flange. We also offer many other special configurations, length and hole size to meet special requirements.

Note: Customization is available

Waveguide HT



Standard Models

P/N	Frequency Range (GHz)	Waveguide	Band Width	Unbalance (dB)	VSWR	Flange	Material
650WHT	1.12-1.70	WR650	10%-20%	±0.25	1.50	FDP14/FDM14	Al
510WHT	1.45-2.20	WR510	10%-20%	±0.25	1.50	FDP18/FDM18	Al
430WHT	1.70-2.60	WR430	10%-20%	±0.25	1.50	FDP22/FDM22	Al/Cu
340WHT	2.20-3.30	WR340	10%-20%	±0.25	1.50	FDP26/FDM26	Al/Cu
284WHT	2.60-3.95	WR284	10%-20%	±0.25	1.50	FDP32/FDM32	Al/Cu
229WHT	3.30-4.90	WR229	10%-20%	±0.25	1.50	FDP40/FDM40	Al/Cu
187WHT	3.95-5.85	WR187	10%-20%	±0.25	1.50	FDP48/FDM48	Al/Cu
159WHT	4.90-7.05	WR159	10%-20%	±0.25	1.50	FDP58/FDM58	Al/Cu
137WHT	5.85-8.20	WR137	10%-20%	±0.25	1.50	FDP70/FDM70	Al/Cu
112WHT	7.05-10.0	WR112	10%-20%	±0.25	1.50	FBP84/FBM84/FBE84	Al/Cu
90WHT	8.20-12.4	WR90	10%-20%	±0.25	1.50	FBP100/FBM100/FBE100	Al/Cu
75WHT	10.0-15.0	WR75	10%-20%	±0.25	1.50	FBP120/FBM120/FBE120	Al/Cu
62WHT	12.4-18.0	WR62	10%-20%	±0.25	1.50	FBP140/FBM140/FBE140	Al/Cu
51WHT	15.0-22.0	WR51	10%-20%	±0.25	1.50	FBP180/FBM180/FBE180	Al/Cu
42WHT	18.0-26.5	WR42	10%-20%	±0.30	1.50	FBP220/FBM220/FBE220	Al/Cu
34WHT	22.0-33.0	WR34	10%-20%	±0.30	1.50	FBP260/FBM260/FBE260	Al/Cu
28WHT	26.5-40.0	WR28	10%-20%	±0.30	1.50	FBP320/FBM320/FBE320	Al/Cu

Ordering Information

P/N:

34 **WHT**
 WR Product
 Size Code

Example: 34WHT is a WR34 waveguide HT.

AINFO manufactures wide variety of waveguide HT assemblies specially designed for every customers unique requirements. Waveguide HT can be assembled with many types of flange. We also offer many other special configurations, length and hole size to meet special requirements.

Note: Customization is available

Flexible Waveguide



Standard Models

P/N	Frequency Range (GHz)	Waveguide	VSWR	Attenuation (dB/m)	Average Power (KW)	Inner size (mm)	Airpress (MPa) Max.	Bend Radius (mm)Min.	
								E-Bend	H-Bend
430WF-XX	1.70-2.60	WR430	1.15	0.13	20	109.22x54.61	0.2	312	624
340WF-XX	2.20-3.30	WR340	1.15	0.15	20	86.36x43.18	0.2	260	520
284WF-XX	2.60-3.95	WR284	1.15	0.16	10	72.14x34.04	0.2	204	408
229WF-XX	3.30-4.90	WR229	1.15	0.18	8	58.17x29.08	0.2	166	332
187WF-XX	3.95-5.85	WR187	1.15	0.2	6.5	47.55x22.15	0.2	160	320
159WF-XX	4.90-7.05	WR159	1.15	0.25	6	40.39x20.19	0.2	129	258
	5.725-6.425		1.10						
137WF-XX	5.85-8.20	WR137	1.15	0.30	5	34.85x15.8	0.2	100	200
	7.125-7.725		1.10						
112WF-XX	7.05-10.0	WR112	1.15	0.35	4	28.5x12.6	0.2	76	152
	7.725-8.50		1.10						
90WF-XX	8.20-12.4	WR90	1.15	0.45	2	22.86x10.16	0.2	66	120
	10.7-11.7		1.10						
75WF-XX	10.0-15.0	WR75	1.20	0.65	1.50	19.05x9.525	0.2	64	120
	13.75-14.5		1.15						
62WF-XX	12.4-18.0	WR62	1.20	0.74	1	15.8x7.9	0.2	54	105
28WF-XX	26.5-40.0	WR28	1.40	2.5	0.15	7.112x3.556	0.2	20	40

Ordering Information

P/N:

112 **WF** - **XX**
WR Size Product Code Length (mm)

Example: 112WF-300 is a WR112 flexible waveguide. Length is 300mm.

AINFO manufactures wide variety of flexible waveguide assemblies specially designed for every customers unique requirements.

Flexible Waveguide can be assembled with many types of flange. We also offer many other special configurations, length and hole size to meet special requirements.

Note: Customization is available

Flexible Twist Waveguide



Standard Models									
P/N	Frequency Range (GHz)	Waveguide	VSWR	Attenuation (dB/m)	Average Power (KW)	Inner size (mm)	Twist (deg/m) Max.	Bend Radius (mm) Min.	
								E-Bend	H-Bend
159WFT-XX	4.90-7.05	WR159	1.15	0.25	2.50	40.39x20.19	170	129	258
	5.725-6.425		1.10						
137WFT-XX	5.85-8.20	WR137	1.15	0.30	2.00	34.85x15.8	205	100	200
	5.85-6.425		1.10						
	6.425-7.125		1.10						
	7.125-7.725		1.10						
	7.725-8.20		1.10						
112WFT-XX	7.05-10.0	WR112	1.15	0.40	1.20	28.5x12.6	262	76	152
	7.125-7.725		1.10						
	7.725-8.50		1.10						
90WFT-XX	8.20-12.4	WR90	1.15	0.45	0.96	22.86x10.16	308	66	120
	10.7-11.7		1.10						
75WFT-XX	10.0-15.0	WR75	1.20	0.65	0.75	19.05x9.525	430	64	120
	12.75-13.25		1.15						
	13.75-14.5		1.15						
62WFT-XX	12.4-18.0	WR62	1.20	0.95	0.40	15.8x7.9	436	54	105

Ordering Information

P/N:

159 **WFT** - **XX**
 WR Size Product Code Length (mm)

Example: 159WFT-300 is a WR159 flexible twist waveguide. Length is 300mm.

AINFO manufactures wide variety of flexible twist waveguide assemblies specially designed for every customers unique requirements. Flexible Twist Waveguide can be assembled with many types of flange. We also offer many other special configurations, length and hole size to meet special requirements.

Note: Customization is available

Elliptical Waveguide



Standard Models

P/N	Frequency Range (GHz)	VSWR	Attenuation (dB/100m)	Group Delay (ns/100m)	Peak Power (KW)	Dimensions (mm)	Weight (Kg/m)	Bend Radius (mm) Min.	
								E-Bend	H-Bend
WE26-XX	2.5-2.7	1.30	2	423	460	108.4x61.3	2.5	600	1500
WE38-XX	3.4-4.2	1.15	3.6(3.4GHz) 2.6(4.2GHz)	419	310	82.6x47.4	1.7	340	840
WE48-XX	4.4-5.0	1.15	4.7(4.4GHz) 3.8(5.0GHz)	413	190	72x42	1.4	300	750
WE54-XX	5.0-6.0	1.15	5.3(5.0GHz) 4.3(6.0GHz)	413	150	58.5x38	1	240	580
WE62-XX	5.925-7.125	1.15	5.2(5.9GHz) 4.5(7.1GHz)	411	102	52x30	0.85	220	550
WE80-XX	7.125-8.5	1.15	6.3(7.1GHz) 5.6(8.2GHz)	415	60	44.8x27.6	0.72	200	520
WE90-XX	8.6-10.0	1.20	11.2(8.6GHz) 9.5(10.0GHz)	405	40	34x24	0.6	160	350
WE110-XX	10.7-11.7	1.20	10.3(10.7GHz) 9.8(11.7GHz)	405	35	33x21	0.5	150	300
WE120-XX	10.95-12.75	1.25	10	415	35	29x15	0.4	150	300
WE130-XX	12.275-13.25	1.15	11.4(12.2GHz) 11.2(13.2GHz)	414	30	29.5x14.5	0.4	150	300
WE148-XX	14.0-15.35	1.25	16.5(14.0GHz) 15.5(15.4GHz)	425	20	25.3x16	0.34	150	350
WE188-XX	17.7-19.7	1.30	20.5(17.7GHz) 19.0(19.7GHz)	416	7	23.6x16.1	0.22	150	380

Ordering Information

P/N:

WE26 - **XX**
Product Code Length (mm)

Example: WE26-200 is an elliptical waveguide, Length is 200mm.

AINFO manufactures wide variety of elliptical waveguide assemblies specially designed for every customers unique requirements. Elliptical Waveguide can be assembled with many types of flange. We also offer many other special configurations, length and hole size to meet special requirements.

Note: Customization is available