



1. 2-way 0 ° DC to 8000MHz

P/N	Freq. Range (MHz)	Insertion Loss (dB)		Isolation (dB)		VSWR		Phase Balance (°)	Amp. Balance (dB)	Case
		Typ/Max	Typ/Min	In	Out	Max				
JXWBGF-T-2-0.2-1000	0.2-1000	0.9/1.2	23/18	1.5	-	4	0.3	-		
JXWBGF-T-2-0.25-300	0.25-300	0.4/1.0	25/20	-	-	5	0.3	T12-3		
JXWBGF-T-2-1-750	1-750	0.8/1.0	23/18	-	-	4	0.3	T12-3		
JXWBGF-T-2-5-500	5-500	0.6/0.8	25/20	-	-	4	0.3	T12-3		
JXWBGF-T-2-5-500-B15	5-500	0.6/0.8	25/20	-	-	4	0.3	-		
JXWBGF-T-2-5-500-SF	5-500	0.6/0.8	25/20	-	-	4	0.3	-		
JXWBGF-T-2-5-600	5-600	0.5/0.9	30/20	-	-	3	0.4	T12-3		
JXWBGF-T-2-10-1000	10-1000	0.8/1.0	20/11	-	-	4	0.3	T12-3		
JXWBGF-T-2-10-1000-B15	10-1000	0.8/1.0	20/11	-	-	4	0.3	-		
JXWBGF-T-2-10-2000-1	10-2000	0.6/1.0	20/11	-	-	6	0.5	T12-3		
JXWBGF-T-2-10-2000-2	10-2000	0.6/1.0	-	-	-	6	0.5	T14		
JXWBGF-T-2-50-2000	50-2000	1.2	18	1.25	1.25	2	0.9	-		
JXWBGF-T-2-130-175-5N	130-175	0.35	25	1.20	-	1	0.2	-		
JXWBGF-T-2-400-3600	400-3600	1.3	17	1.40	-	3	0.3	-		
JXWBGF-T-2-450-890	450-890	0.5	20	1.25	-	3	0.3	-		
JXWBGF-T-2-470-820-NF	470-820	-	-	-	-	2	0.2	-		
JXWBGF-T-2-500-1000	500-1000	0.25/0.6	25/20	-	-	2	0.2	T15-1		
JXWBGF-T-2-500-2000-1	500-2000	0.5/0.8	25/20	-	-	3	0.2	T15-1		
JXWBGF-T-2-500-2000-2	500-2000	0.5	20	1.25	1.20	2	0.2	-		
JXWBGF-T-2-800-1000-1	800-1000	0.5	20	-	-	2	0.2	T15-1		
JXWBGF-T-2-800-1000-2	800-1000	0.5	20	-	-	2	0.2	T1		
JXWBGF-T-2-800-1300	800-1300	0.3	20	1.25	1.25	3	0.2	-		
JXWBGF-T-2-800-1200_T	800-1200	0.6	20	1.30	-	±2	±0.3	-		
JXWBGF-T-2-800-2200	800-2200	0.4/1.0	25/18	-	-	3	0.2	T15-2		
JXWBGF-T-2-800-2500-1	800-2500	0.3	20	1.3	-	2	0.2	T12		
JXWBGF-T-2-800-2500	800-2500	0.4	22	1.25	1.25	3	0.2	-		
JXWBGF-T-2-806-821	806-821	0.8	20	1.25	1.25	6	0.5	-		
JXWBGF-T-2-1000-2000	1000-2000	-	-	1.2	1.2	2	0.2	-		



1. 2-way 0 ° DC to 8000MHz

JXWBGF-T-2-1000-2000-1	1000-2000	0.25/0.6	25	1.2	1.2	2	0.2	T15-1
JXWBGF-T-2-1000-2000-50_N	1000-2000	0.4	22	1.25	1.25	±2	±0.3	-
JXWBGF-T-2-1000-3000	1000-3000	0.4/0.8	20/18	-	-	3	0.3	T15-1
JXWBGF-T-2-1800-3600	1800-3600	0.5/1.0	25/20	-	-	3	0.4	T15-1
JXWBGF-T-2-2000-3000	2000-3000	0.4	20	1.30	1.30	3	0.3	-
JXWBGF-T-2-2000-4200	2000-4200	0.4/0.8	25/19	-	-	6	0.4	T15-1
JXWBGF-T-2-2200-2400	2200-2400	0.25	20	1.25	1.25	-	-	-
JXWBGF-T-2-2200-2700-80	2200-2700	0.4	20	1.30	1.30	3	0.2	-
JXWBGF-T-2-2300-5300	2300-5300	0.8	20	1.30	1.30	6	0.4	-
JXWBGF-T-2-2490-2690	2490-2690	0.3	22	1.40	1.40	1	0.3	-
JXWBGF-T-2-3100-3400	3100-3400	0.3	25	1.20	1.20	1.5	0.2	-
JXWBGF-T-2-3700-4800	3700-4800	0.6	10	1.30	1.30	5	0.5	-
JXWBGF-T-2-4000-6000	4000-6000	0.8	20	1.30	1.30	3	0.3	-
JXWBGF-T-2-4000-6000-1	4000-6000	0.6	20	-	-	3	0.2	-
JXWBGF-T-2-4200-6000	4200-6000	0.5/1.0	25/20	-	-	3	0.4	T15-1
JXWBGF-T-2-5800-7100	5800-7100	0.6	10	1.30	1.30	5	0.5	-
JXWBGF-T-2-10250-14500	10250-14500	0.8	19	1.40	1.40	6	0.3	-

2. 2-way 90 ° 20 to 3000MHz

P/N	Freq. Range (MHz)	Insertion Loss (dB) Typ/Max	Isolation (dB) Typ/Min	VSWR Typ	Balance		Case
					Phase	Amp.	
					(°) Max	(dB) Max	
JXWBGF-T-2-90-20-40	20-40	0.3/0.7	25/20	1.2	3	1.0	T12-8
JXWBGF-T-2-90-40-80	40-80	0.3/0.7	25/20	1.2	3	1.5	T12-8
JXWBGF-T-2-90-80-160	80-160	0.3/0.7	25/20	1.2	3	1.5	T12-8
JXWBGF-T-2-90-1000-2000	1000-2000	0.4/1.0	25/20	1.3	2	1.0	T27
JXWBGF-T-2-90-2000-3000	2000-3000	0.4/1.0	25/20	1.4	2	1.0	T27

3. 2 -way 180 ° 1 to 3000MHz

P/N	Freq. Range (MHz)	Insertion Loss(dB)			Isolation(dB)			VSWR		Balance		Case
		L	M	U	L	M	U	Max	Phase	Amp.		
		Typ/Max	Typ/Max	Typ/Max	Typ/Min	Typ/Min	Typ/Min	In	Out	(°) Max	(dB) Max	
JXWBGF-T-2-180-1-200	1-200	0.75/1.0	0.5/0.8	0.75/1.2	30/25	30/25	30/20	-	-	4	0.3	T12-3
JXWBGF-T-2-180-10-600	10-600	1.0/1.5	1.1/1.6	1.2/2.2	30/25	25/20	20/16	-	-	6	0.9	T12-3
JXWBGF-T-2-180-0.1-50	0.1-50	0.5/1.0	0.5/1.0	0.5/1.0	30/25	30/25	25/20	-	-	3	0.5	T12-3
JXWBGF-T-2-180-50-1000	50-1000	1.2/1.9	-	1.6/2.4	30/20	-	25/20	-	-	7	1.0	T12-3
JXWBGF-T-2-180-50-1500	50-1500	1.0/1.2	1.5	2.0	14	14	14	-	-	4	1.0	T12-3
JXWBGF-T-2-180-1000-2000	1000-2000	-	1.5/1.6	-	-	22/20	-	-	-	6	1.0	T15-1
JXWBGF-T-2-180-1000-3000	1000-3000	-	1.5/2.5	-	-	22/18	-	-	-	6	1.0	T15-1

4. 3-way 0° 1 to 2500MHz

P/N	Freq. Range (MHz)	Insertion Loss(dB)	Isolation(dB)	VSWR Max		Phase Balance (°)	Amp. Balance (dB)	Case
		Typ/Max	Typ/Min	In	Out	Max	Max	
JXWBGF-T-3-1-300	1-300	0.4/0.6	25/30	-	-	4	0.4	T12-4
JXWBGF-T-3-10-500	10-500	0.8/1.2	35/24	-	-	4	0.5	-
JXWBGF-T-3-10-500-SF	10-500	0.8/1.2	35/24	-	-	4	0.5	-
JXWBGF-T-3-10-1000	10-1000	0.8/1.2	35/24	-	-	4	0.5	T12-4
JXWBGF-T-3-10-1000-B16	10-1000	0.8/1.2	35/24	-	-	4	0.5	-
JXWBGF-T-3-450-890	450-890	0.7	20	1.3	1.3	6	0.5	-
JXWBGF-T-3-500-1000	500-1000	0.6	20	1.4	-	-	0.3	T16-1
JXWBGF-T-3-800-1000	800-1000	0.7	20	1.4	-	-	0.3	T16-1
JXWBGF-T-3-800-2200	800-2200	0.8	20	1.4	-	-	0.3	T16-2
JXWBGF-T-3-800-2500	800-2500	0.6	22	1.25	1.25	5	0.35	-
JXWBGF-T-3-820-920	820-920	0.6	20	1.3	-	5	0.2	T16-1
JXWBGF-T-3-1000-2000	1000-2000	0.8	20	1.4	-	-	0.3	T16-1
JXWBGF-T-3-1700-2500	1700-2500	1.0	20	1.4	-	-	0.3	T16-1

5. 4-way 0° 1 to 10000MHz

P/N	Freq. Range (MHz)	Insertion Loss(dB)	Isolation(dB)	VSWR Max		Phase Balance (°)	Amp. Balance (dB)	Case
		Typ/Max	Typ/Min	In	Out	Max	Max	
JXWBGF-T-4-1-200	1-200	0.7/1.2	25/20	-	-	10	0.3	T12-5
JXWBGF-T-4-1-500	1-500	0.6/1.5	25/20	-	-	8	0.4	T12-5
JXWBGF-T-4-10-1000-1	10-1000	1.5/2.0	25/20	-	-	8	0.7	T12-5
JXWBGF-T-4-10-300	10-300	0.9/1.2	30/25	-	-	-	0.2	T12-5
JXWBGF-T-4-10-500	10-500	1.0	25	1.3	-	5	0.5	T17
JXWBGF-T-4-10-1000-1	10-1000	1.5/2.0	25/20	-	-	8	0.7	-
JXWBGF-T-4-10-1000-2	10-1000	1.0	22	1.3	-	5	0.5	T17
JXWBGF-T-4-450-890	450-890	1.0	20	1.3	1.3	6	0.5	-
JXWBGF-T-4-800-1000	800-1000	0.8	20	1.2	1.2	5	0.4	T18
JXWBGF-T-4-800-1300	800-1300	0.4	20	1.25	-	3	0.3	-
JXWBGF-T-4-800-2000-1	800-2000	0.6/1.0	25/20	1.3	1.3	6	0.6	T30
JXWBGF-T-4-800-2200	800-2200	0.4/1.0	25/20	1.4	1.4	6	0.6	T18
JXWBGF-T-4-1000-2000-1	1000-2000	0.6/1.0	20	1.3	1.3	6	0.6	T18
JXWBGF-T-4-1000-2000-50_N	1000-2000	0.7	20	1.3	1.3	±5	±0.35	-
JXWBGF-T-4-3400-6800	3400-6800	1.2	10	1.3	1.3	5	0.5	-
JXWBGF-T-4-3700-4800	3700-4800	1.2	10	1.3	1.3	5	0.5	-
JXWBGF-T-4-4000-6000	4000-6000	1.2	18	1.35	1.35	6	0.5	-
JXWBGF-T-4-4000-6000-1	4000-6000	0.5/1.0	25/20	1.5	1.5	5	0.6	T30
JXWBGF-T-4-5800-7100	5800-7100	0.8	10	1.3	1.3	5	0.5	-
JXWBGF-T-4-9000-9600	9000-9600	0.6	20	1.4	1.4	-	-	-

6. 5-way 0 ° 1 to 900MHz

P/N	Freq. Range (MHz)	Insertion Loss(dB)	Isolation(dB)	VSWR Max		Phase Balance (°)	Amp. Balance (dB)	Case
		Typ/Max	Typ/Min	In	Out	Max	Max	
JXWBGF-T-5-1-300	1-300	1.5/2.0	20/18	-	-	8	0.6	T12-6
JXWBGF-T-5-5-500-B12	5-500	1.5/2.0	20/18	-	-	8	0.6	-
JXWBGF-T-5-806-824	806-824	1	18	1.35	1.35	8	0.5	-

7. 6-way 0 ° 1 to 6000MHz

P/N	Freq. Range (MHz)	Insertion Loss(dB)	Isolation(dB)	VSWR Max		Phase Balance (°)	Amp. Balance (dB)	Case
		Typ/Max	Typ/Min	In	Out	Max	Max	
JXWBGF-T-6-1-200	1-200	0.75/1.2	25/20	-	-	12	0.6	T31
JXWBGF-T-6-1-200-B	1-200	0.75/1.2	30/25	-	-	12	0.6	-
JXWBGF-T-6-1-300	1-300	1.2/1.8	30/25	1.2	1.2	40	0.4	T3
JXWBGF-T-6-10-1000	10-1000	3.2	20/18	-	-	8	0.6	-
JXWBGF-T-6-800-1000	800-1000	-	-	-	-	-	0.5	T20
JXWBGF-T-6-890-960	890-960	-	-	-	-	-	0.6	T3
JXWBGF-T-6-2400-6000	2400-6000	1.0	18	1.25	1.25	-	-	-

8. 8-way 0 ° 0.5 to 10000MHz

P/N	Freq. Range (MHz)	Insertion Loss (dB)	Isolation (dB)	VSWR Max		Phase Balance (°)	Amp. Balance (dB)	Case
		Typ/Max	Typ/Min	In	Out	Max	Max	
JXWBGF-T-8-0.5-175	0.5-175	1.0/1.6	25/18	-	-	5	0.3	T32
JXWBGF-T-8-5-1000	5-1000	1.6/2.7	20/15	-	-	13	1.2	T32
JXWBGF-T-8-5-500	5-500	1.8/2.0	25/20	-	-	8	0.7	T13
JXWBGF-T-8-5-500-B32	5-500	1.8/2.0	25/20	-	-	8	0.7	-
JXWBGF-T-8-800-1000	800-1000	0.9	20	1.2	1.5	-	0.5	T21
JXWBGF-T-8-800-1300	0.8-1.3	0.8	20	1.25	-	5	0.4	-
JXWBGF-T-8-1000-2000-1	1000-2000	1.0	20	1.5	-	-	0.5	T21
JXWBGF-T-8-3700-4200	3700-4200	0.3/0.8	25	1.6	-	8	0.5	T21
JXWBGF-T-8-9000-9600	9000-9600	1.5	16	1.5	1.5	-	-	-

9. 10-way 0 ° 0.5 to 2000MHz

P/N	Freq. Range (MHz)	Insertion Loss(dB)			Isolation(dB)			VSWR		Unbalance		Case
		L	M	U	L	M	U	Max	Phase	Amp.		
		Typ/Max	Typ/Max	Typ/Max	Typ/Min	Typ/Min	Typ/Min	In	Out	(°) Max	(dB) Max	
JXWBGF-T-10-0.5-100	0.5-100	0.5/0.8	0.4/1.0	1.8/1.5	30/20	30/20	25/20	-	-	10	0.4	T33
JXWBGF-T-10-5-500-B33	5-500	0.5/1.0	0.4/2.0	1.8/2.5	30/20	30/20	25/20	-	-	8	0.6	-
JXWBGF-T-10-800-900	800-900	-	1.5/2.0	-	-	25/20	-	-	-	-	0.6	T23
JXWBGF-T-10-800-2000	800-2000	-	1.0/2.5	-	-	25/18	-	-	-	-	1.2	T23



10. 12-way 0 ° 11500-12000MHz

P/N	Freq. Range (GHz)	Insertion Loss(dB)	Isolation(dB)	VSWR	Phase Balance(°)	Amplitude Balance(dB)
JXWBGF-T-12-11.5-12-15	11.5-12	1.5	15	1.4	10	0.15

11. 13-way 0 ° 10700-12750MHz

P/N	Freq. Range (GHz)	Insertion Loss(dB)	Isolation(dB)	VSWR	Phase Balance(°)	Amplitude Balance(dB)
JXWBGF-T-13-10.7-12.75	10.7-12.75	0.25	17	1.5	-	0.35

12. 24-way 0 ° 0.2 to 6000MHz

P/N	Freq. Range (MHz)	Insertion Loss (dB)	Isolation (dB)	VSWR Max		Phase Balance (°) Max	Amp. Balance (dB) Max	Case
		Typ/Max		Typ/Min	In			
JXWBGF-T-24-0.2-100	0.2-100	1.0/2.0	Typ/Min	-	-	-	0.5	T25
JXWBGF-T-24-1-200	1-200	1.3/2.2	35/30	-	-	-	0.8	T25
JXWBGF-T-24-1-200-2	1-200	0.6/1.3	35/25	-	-	-	0.6	-
JXWBGF-T-24-3600-5100	3600-5100	2.5	22	1.3	1.3	5	0.3	-

13. Broadband Power Divider 500-18000MHz

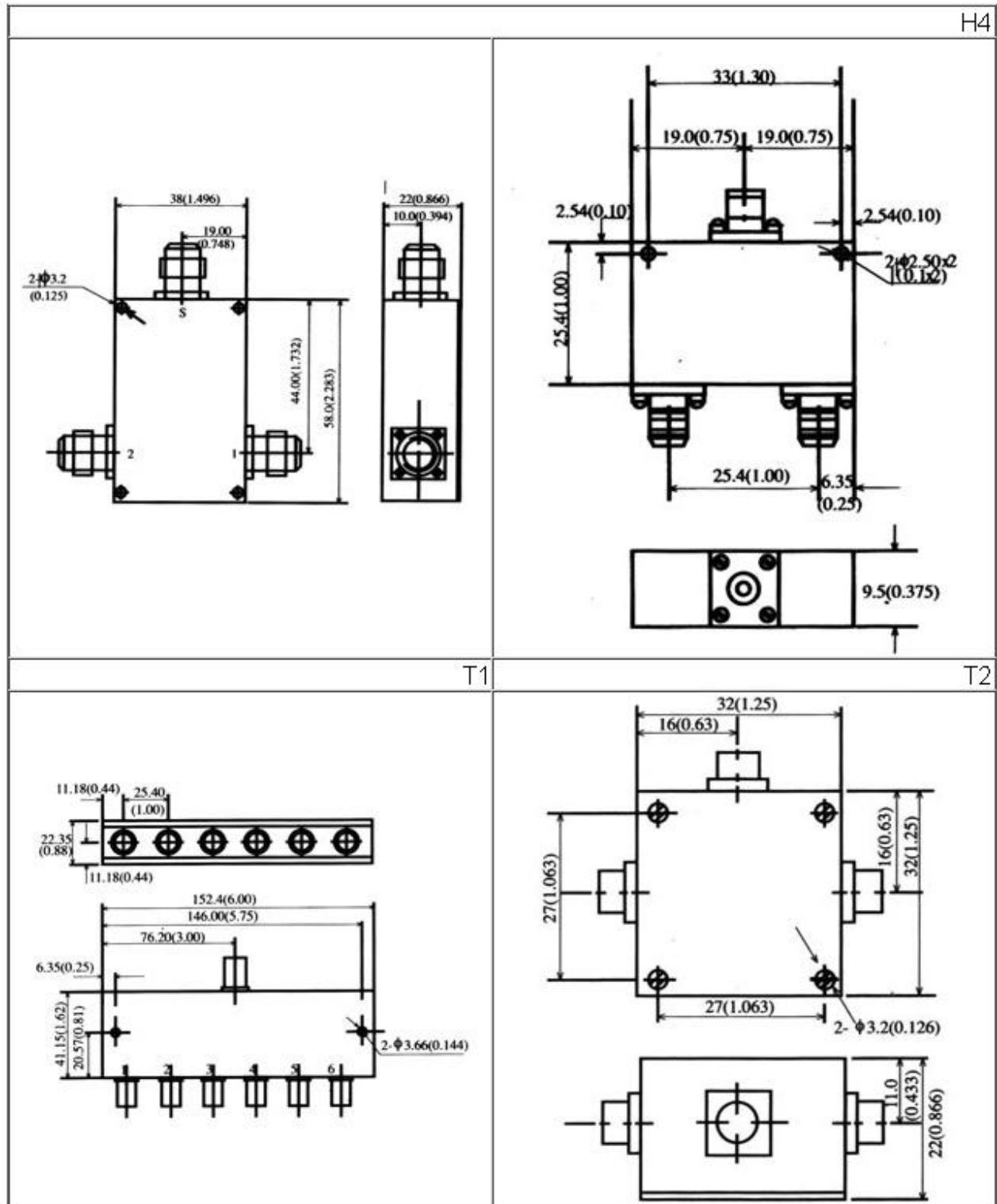
P/N	Freq. Range (MHz)	Insertion Loss (dB) max	Isolation (dB) max	Amplitude Balance (±dB) max	Phase Balance (±°) max	Input VSWR	Output VSWR	Size LxWxH (mm)
JXWBGF-T-2-500-2000	500-2000	0.5	20	0.2	2	1.25	1.2	54X33X28
JXWBGF-T-2-500-2000-2	500-2000	0.5	20	0.2	2	1.25	1.2	54X28X10
JXWBGF-T-2-800-2000	800-2000	0.5	20	0.2	3	1.25	1.25	33X39X10
JXWBGF-T-2-800-2500-2	800-2500	0.5	20	0.2	3	1.25	1.25	38X42X14
JXWBGF-T-2-800-6000	800-6000	0.9	18	0.2	3	1.4	1.3	150X29.4X10
JXWBGF-T-2-1000-2000-2	1000-2000	0.35	20	0.2	2	1.2	1.15	28X28X10
JXWBGF-T-2-1000-4000	1000-4000	0.5	20	0.3	2	1.3	1.2	28X28X10
JXWBGF-T-2-1000-8000	1000-8000	1.2	18	0.3	6	1.35	1.3	41X28X10
JXWBGF-T-2-2000-4000	2000-4000	0.35	20	0.2	2	1.25	1.2	28X28X10
JXWBGF-T-2-2000-8000	2000-8000	0.8	20	0.3	4	1.3	1.2	28X28X10
JXWBGF-T-2-2000-18000	2000-18000	1.2	16	0.3	5	1.5	1.5	47X24X10
JXWBGF-T-2-4000-8000	4000-8000	0.6	20	0.3	3	1.25	1.2	28X28X10
JXWBGF-T-2-4000-18000	4000-18000	0.8	18	0.4	5	1.5	1.5	36X24X10
JXWBGF-T-2-6000-18000	6000-18000	0.7	18	0.4	5	1.5	1.5	30X24X10
JXWBGF-T-3-2000-4000	2000-4000	0.6	18	0.3	-	1.3	1.3	52X41X10
JXWBGF-T-3-2000-8000	2000-8000	1.0	18	0.6	-	1.4	1.3	66.5X37.5X10



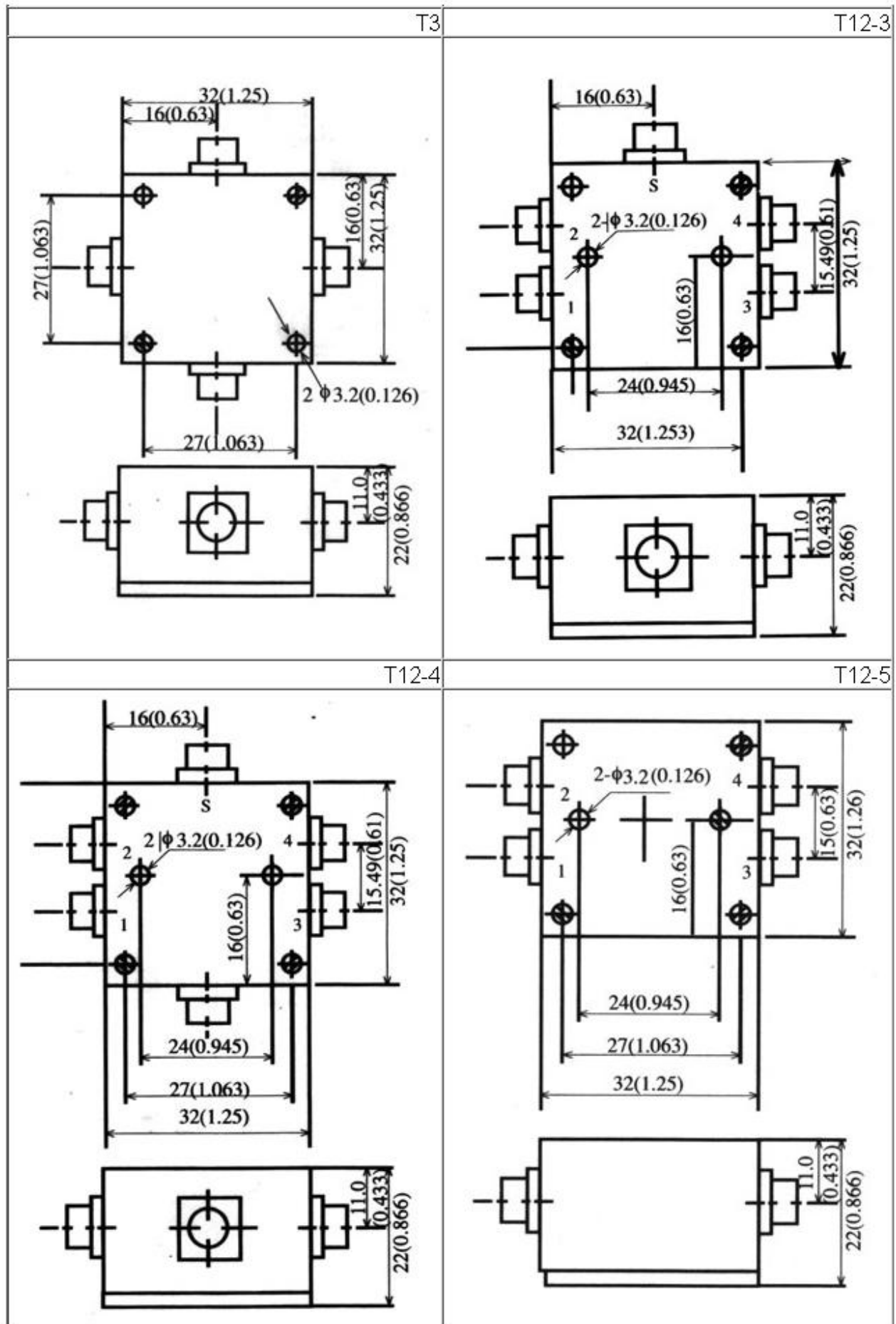
13. Broadband Power Divider 500-18000MHz

JXWBGF-T-3-8000-18000	8000-18000	1.2	18	0.8	-	1.6	1.5	32X39X10
JXWBGF-T-4-500-2000	500-2000	1.0	20	0.3	3	1.25	1.2	76X56X10
JXWBGF-T-4-800-2000-2	800-2000	0.8	20	0.4	6	1.4	1.4	46X66X10
JXWBGF-T-4-800-2500	800-2500	0.8	20	0.4	6	1.4	1.4	48X60X14
JXWBGF-T-4-800-6000	800-6000	1.8	18	0.3	4	1.5	1.4	153X72X10
JXWBGF-T-4-1000-2000-2	1000-3000	0.6	20	0.3	3	1.25	1.2	43X56X10
JXWBGF-T-4-1000-4000	1000-4000	0.8	20	0.3	4	1.3	1.2	43X56X10
JXWBGF-T-4-1000-8000	1000-8000	2.2	15	0.35	6	1.5	1.4	70.5X56X10
JXWBGF-T-4-1000-12000	1000-12000	2.8	16	0.5	7	1.6	1.3	90X75X10
JXWBGF-T-4-2000-4000	2000-4000	0.8	20	0.5	6	1.35	1.35	88.9X54.1X22.4
JXWBGF-T-4-2000-4000-1	2000-4000	0.6	20	0.3	3	1.3	1.2	43X56X10
JXWBGF-T-4-2000-8000-1	2000-8000	1.4	18	0.4	4	1.4	1.3	50X56X10
JXWBGF-T-4-2000-8000	2000-8000	0.9	18	0.5	5	1.35	1.35	64X58X10
JXWBGF-T-4-2000-18000	2000-18000	2.2	16	0.6	10	1.65	1.6	60X69X10
JXWBGF-T-4-4000-8000	4000-18000	1.0	18	0.3	3	1.3	1.25	43X56X10
JXWBGF-T-4-4000-18000	4000-18000	1.6	18	0.5	8	1.6	1.5	60X50.5X10
JXWBGF-T-4-6000-18000	6000-18000	1.3	16	0.5	8	1.6	1.5	45X50.5X10
JXWBGF-T-6-800-2000	800-2000	1.6	18	0.5	8	1.6	1.6	92X86X10
JXWBGF-T-6-800-2500	800-2500	1.9	18	0.9	8	1.6	1.6	90X92X14
JXWBGF-T-6-2000-8000	2000-8000	1.8	18	1.0	6	1.4	1.3	88X83X10
JXWBGF-T-6-8000-18000	8000-18000	2.2	18	0.8	-	1.8	1.6	50X75.5X10
JXWBGF-T-8-500-2000	500-2000	1.5	20	0.3	3	1.4	1.2	103X108X10
JXWBGF-T-8-800-2000	800-2000	1.4	18	0.6	10	1.6	1.6	57X120X10
JXWBGF-T-8-800-2500	800-2500	1.4	18	0.6	10	1.6	1.6	68X118X10
JXWBGF-T-8-1000-2000-2	1000-2000	1.0	20	0.4	5	1.3	1.2	63X108X10
JXWBGF-T-8-1000-4000	1000-4000	1.5	20	0.4	4	1.35	1.25	63X108X10
JXWBGF-T-8-1000-12400	1000-12400	4.0	15	0.5	-	1.8	1.8	136X100X10
JXWBGF-T-8-2000-4000	2000-4000	0.8	20	0.4	5	1.3	1.2	63X108X10
JXWBGF-T-8-2000-6000	2000-6000	1.8	18	0.7	7	1.6	1.6	00108X63X10
JXWBGF-T-8-2000-8000	2000-8000	1.9	18	0.7	7	1.6	1.3	63X108X10
JXWBGF-T-8-4000-8000	4000-8000	1.2	18	0.4	4	1.5	1.25	63X108X10
JXWBGF-T-8-6000-18000	6000-18000	2.2	18	0.8	10	1.8	1.6	101.5X57.5X10
JXWBGF-T-12-2000-8000	2000-8000	2.3	18	1.0	7	1.6	1.3	88X159X10
JXWBGF-T-12-8000-18000	8000-18000	2.2	15	0.8	10	1.8	1.5	76X154X10
JXWBGF-T-16-800-2000	800-2000	2.0	18	0.8	15	1.7	1.7	77X221X10
JXWBGF-T-16-800-2500	800-2500	2.0	18	0.8	15	1.7	1.7	80X220X14

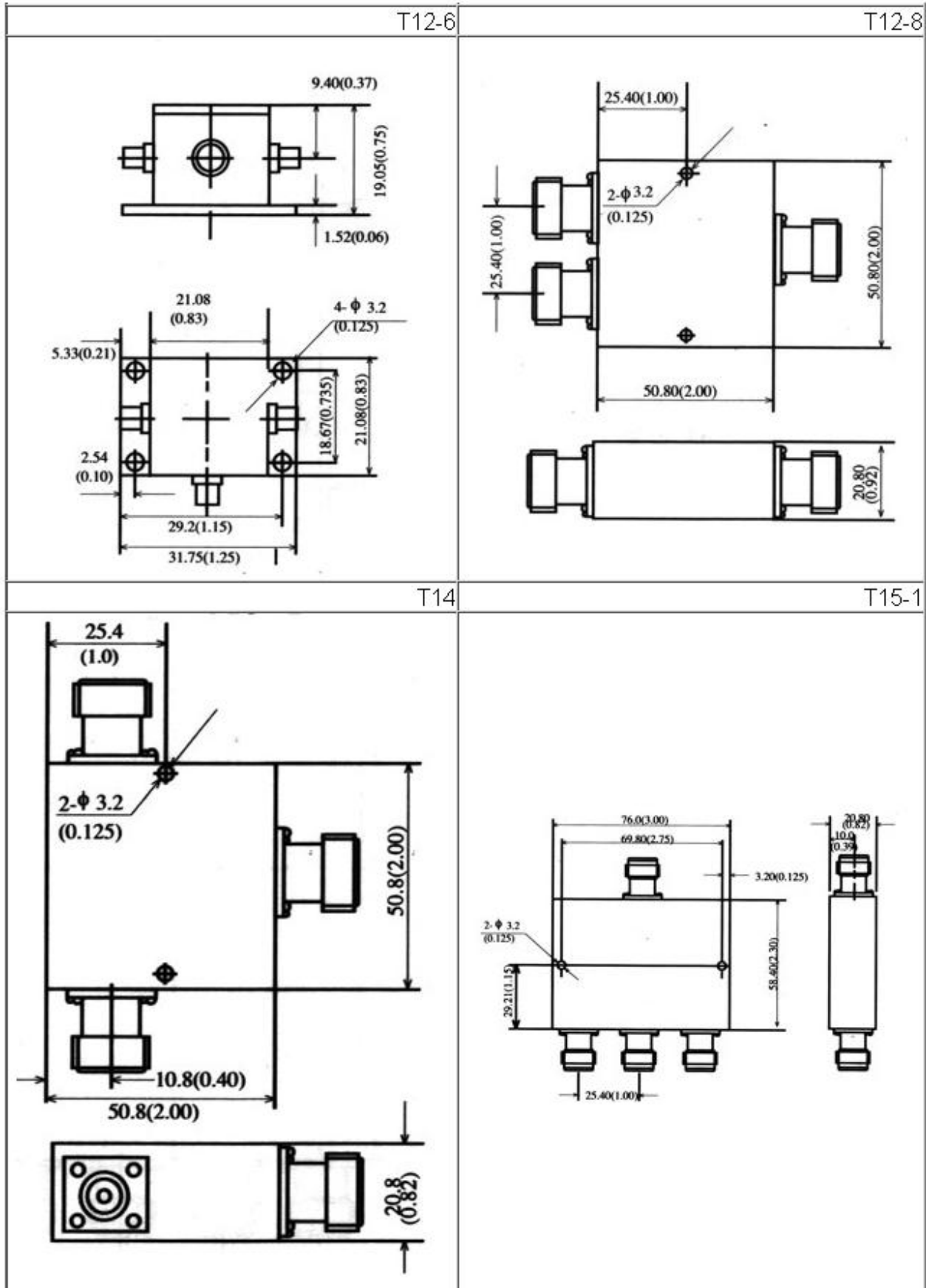
Outline Drawings (Size:mm)



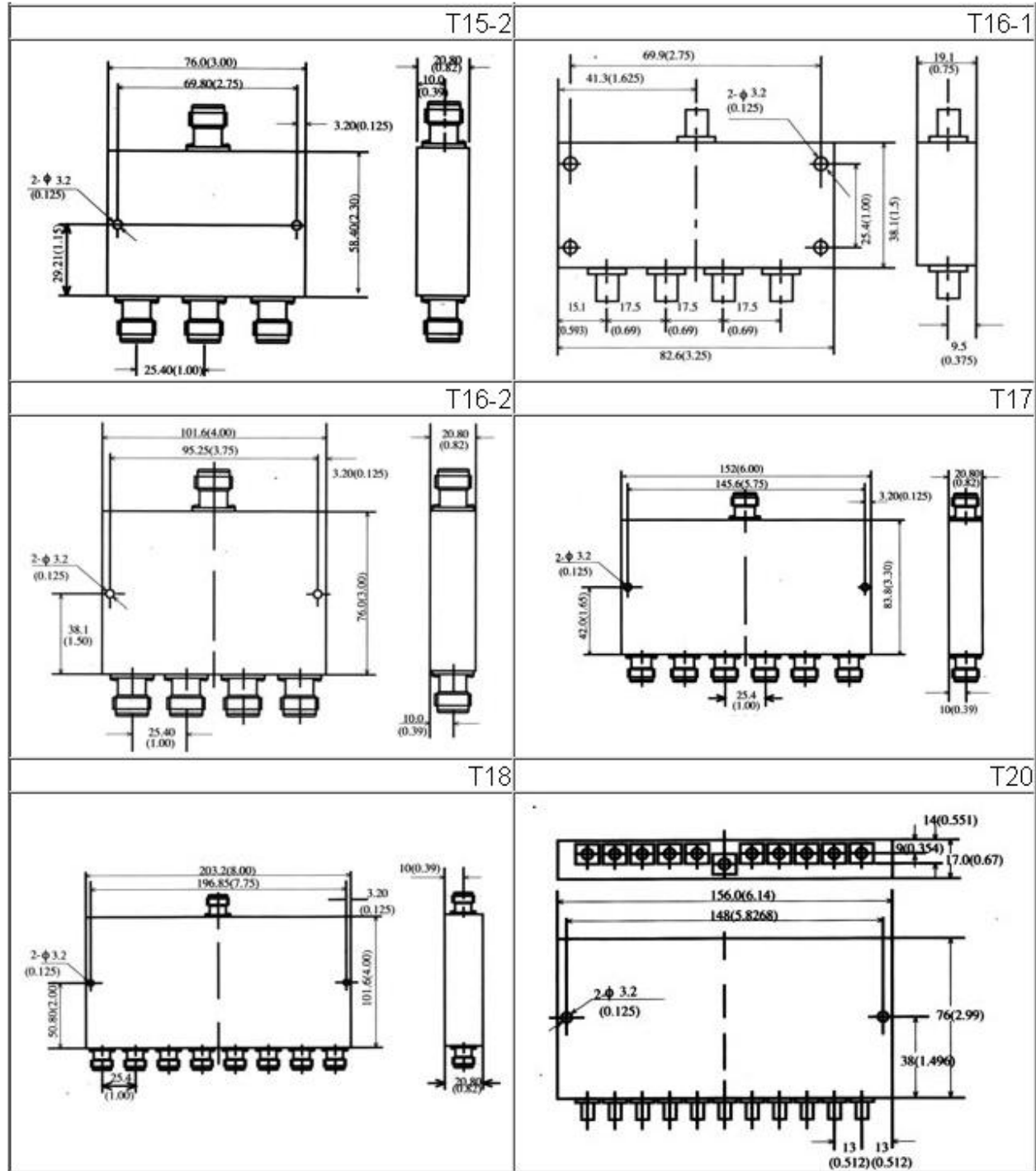
Outline Drawings (Size:mm)



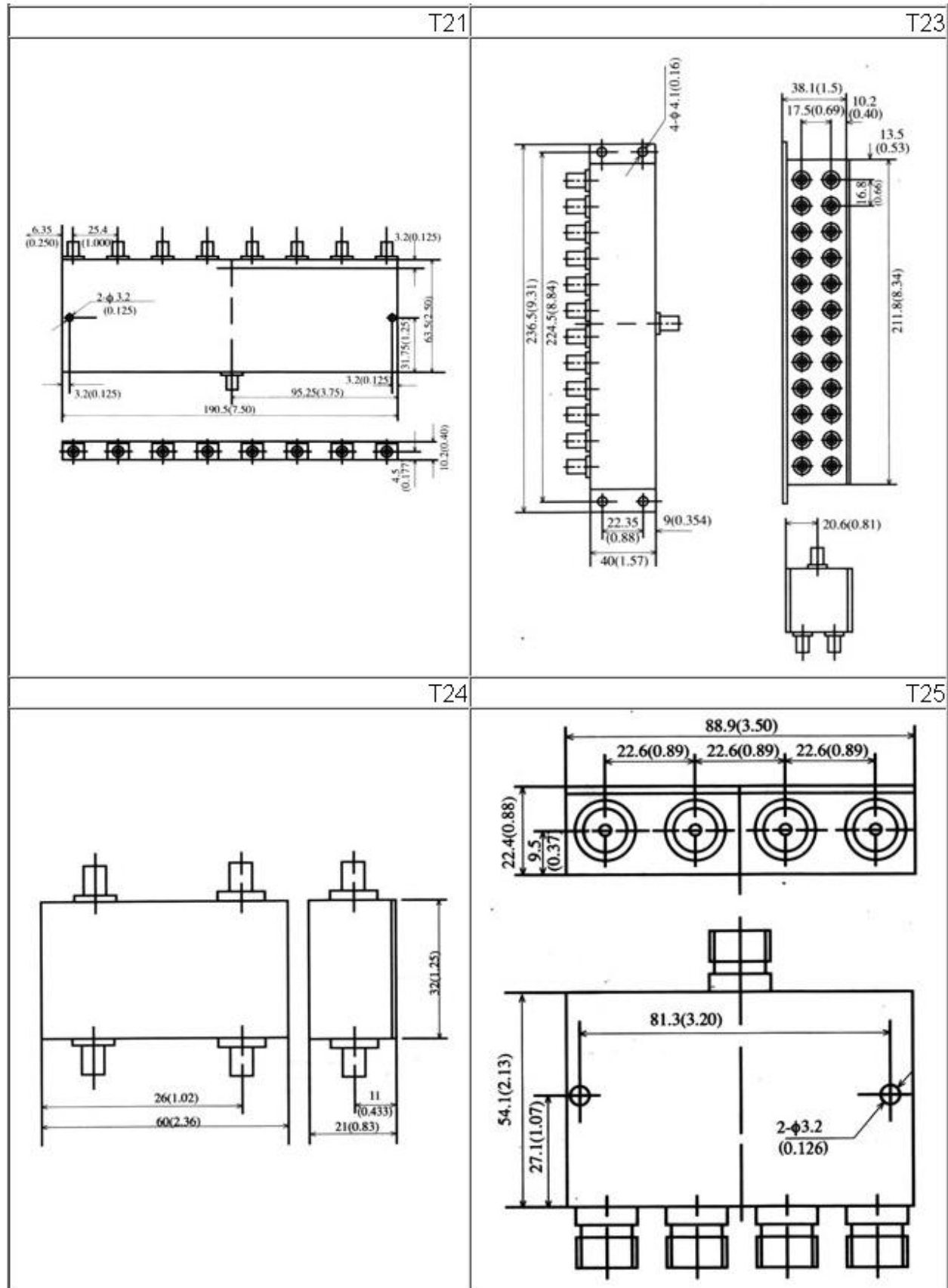
Outline Drawings (Size:mm)



Outline Drawings (Size:mm)



Outline Drawings (Size:mm)



Outline Drawings (Size:mm)

