

Series SMZ push-pull self-latching style RF coaxial connector is changed based on series SMB.

Key performance

Characteristic Impedance : 50Ω

Frequency range : 0~4GHz

Contact resistance :

Center conductor $\leq 6.0m \Omega$

Out conductor $\leq 2.0m \Omega$

Insulation resistance : $\geq 1000M \Omega$

Insulator voltage withstanding : 1000V

VSWR : ≤ 1.30

Connector durability :500 cycles

Applicable spec/std : GJB681A (MIL-C-39012)

Material

Center contacts:

Male---brass, gold plated.

Female---beryllium copper, gold plated

Bodies other metal parts:

brass, gold plated

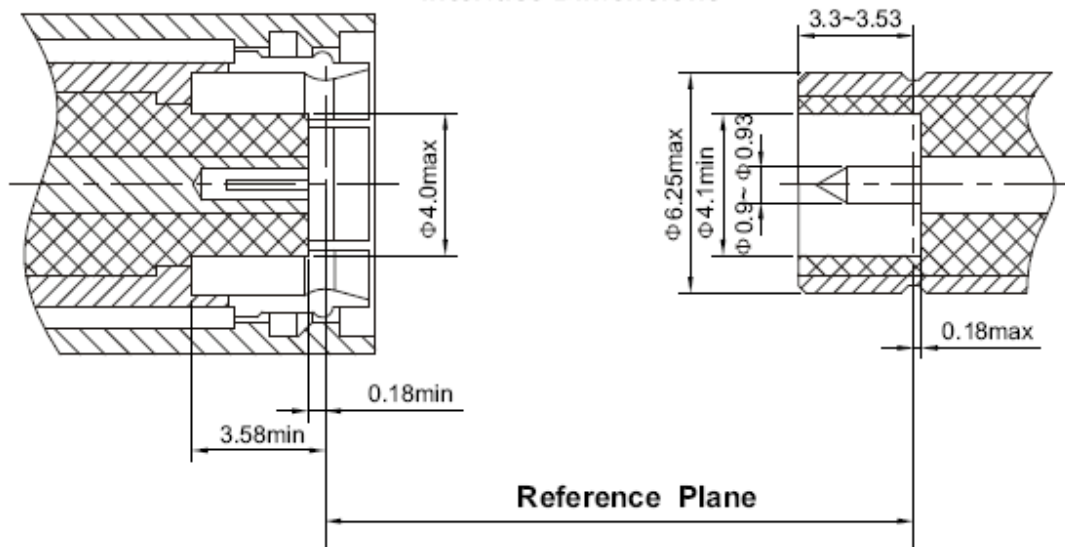
Insulators: Teflon

Crimp ferrule: copper, nickel plated.

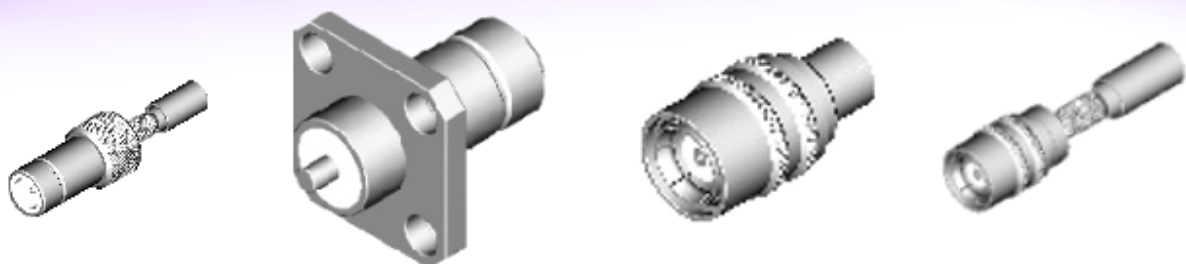
Gasket and seal rings: silicone rubber

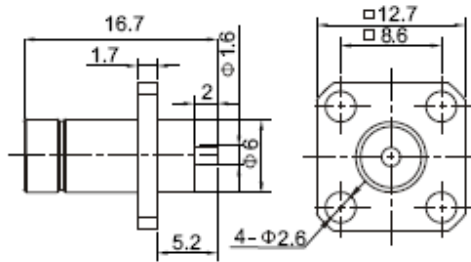
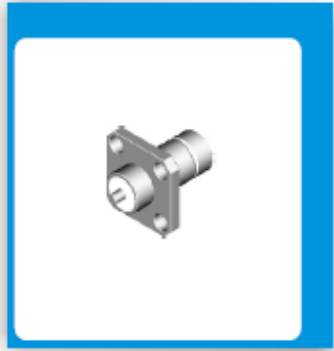
Heat-shrink tubing: thermofit plastic.

Interface Dimensions

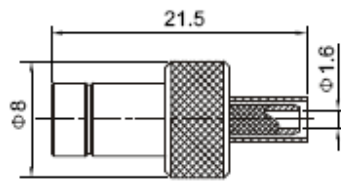


SMZ Connectors

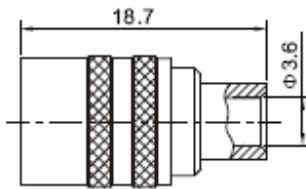




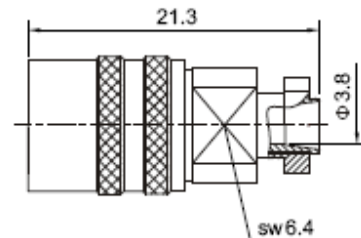
Type	part number	Note
SMZ-JFD	2110-0000	



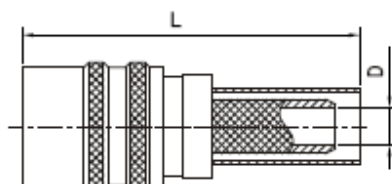
Type	part number	suitable cable	Note
SMZ-J3	2110-6500	3	



Type	part number	suitable cable	Note
SMZ-KB3	2120-6600		



Type	part number	suitable cable	Note
SMZ-K5	2120-6502		



Type	part number	L	D	Note
SMZ-K4Y	2120-6501	30.2	Φ2.3	
SMZ-K5Y	2120-6500	28.5	Φ3.1	