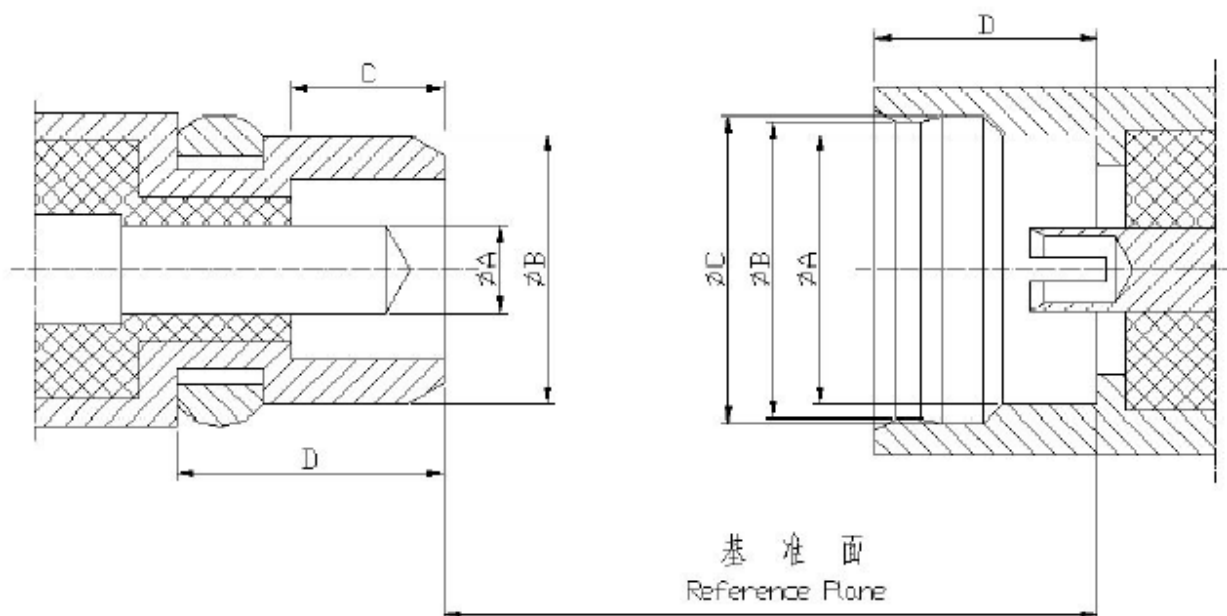


MMCX 系列是按照 CECC22340 要求生产的比 MCX 更小的微型同轴连接器，体积小、重量轻、连接可靠，有一定的抗振性，广泛用于小型通讯设备及个人通信设备中连接器射频同轴电缆。

The MMCX series are snap-on coupling micro-miniature coaxial connectors which are developed as smaller version of MCX connectors according to the specifications of CECC 22340. They have the characteristics of light weight, small size, vibration-proof and reliable contact, are widely used to connect with RF coaxial cables in the smallest of instruments as well as personal communication equipments.



界面尺寸 Interface Mating Dimensions

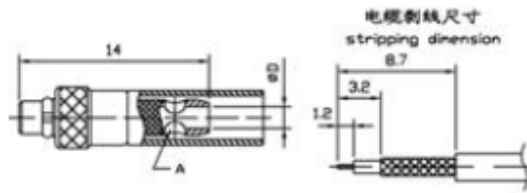


	PLUG (mm)	
	MIN	MAX
A	0.38	0.42
B	-	2.4
C	1.45	-
D	2.7	

	JACK (mm)	
	MIN	MAX
A	2.41	-
B	2.84	2.9
C	3	3.04
D	2.6	-

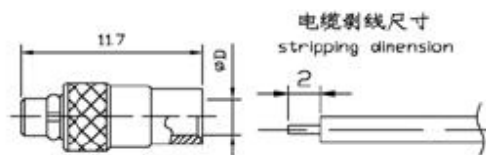
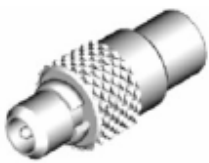
主要技术特性 Technical Characteristics:

环境温度范围 Temperature range	-55~+155℃	
电气性能 Electrical Characteristics		
特征阻抗 Characteristic impedance	50Ω	
工作电压 Working voltage	335V max(有效值)	
频率范围 Frequency range	0~6GHz	
介质耐压 Dielectric withstanding voltage	海平面 at sea level: 750V(volts RMS)	
接触电阻 Contact resistance	内导体 center contact	≤10.0mΩ
	外导体 Outer contact	≤5.0mΩ
绝缘电阻 Insulation resistance	≥1000MΩ	
电压驻波比 VSWR	直式 straight	≤1.20
	弯式 right - angle	
材料与涂覆 Mechanical Characteristics		
壳体和其它金属零件 Body or other metallic parts	黄铜镀金 Brass, gold plated	
插针 Male center contacts:	黄铜镀金 Brass, gold plated	
插孔 Female center contacts:	铍青铜镀金 Beryllium copper, gold plated	
绝缘体 Insulators:	聚四氟乙烯 PTFE	
压接套 Crimp ferrules:	铜合金镀镍或镀金 Copper alloy, nickel or gold plated	
密封件 Sealing washer	硅橡胶 Silicone rubber	
连接器机械耐久性 Connector durability	500 次 Cycles	



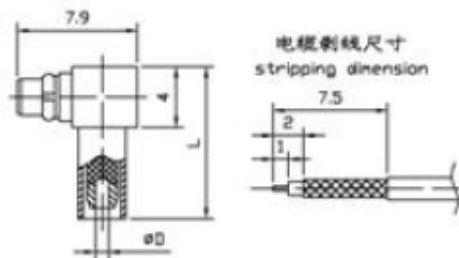
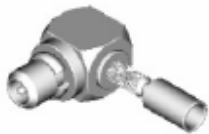
产品型号	电缆型号	D	备注
MMCX-J2	SFF-50-1	0.9	A 处打 $\varnothing 1.5$ 焊线孔
MMCX-J3	SFF-50-1.5-1 RG316/U	1.6	A 处无焊线孔

MMCX-J2



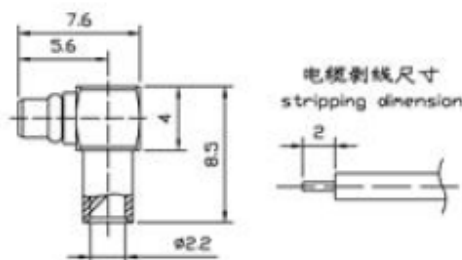
产品型号	电缆型号	D	备注
MMCX-JB2	SFT-50-2-1 RG405/U FCCAVG FCCAVG1	2.2	
MMCX-JB3	SFT-50-3-1	3.6	

MMCX-JB2



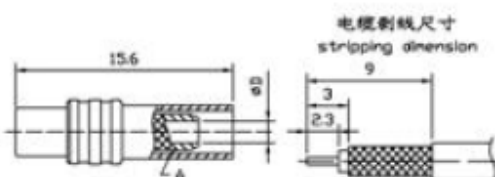
产品型号	电缆型号	D	L	备注
MMCX-JW2	SFF-50-1 RG178	0.9	10.0	压接尾上打 $\varnothing 1.5$ 焊线孔
MMCX-JW3	SFF-50-1.5-1 RG316/U	1.6	12.0	

MMCX-JW2



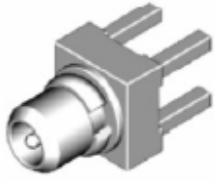
产品型号	电缆型号	备注
MMCX-JWB2	SFF-50-1.5-1 RG405/U	

MMCX-JWB2

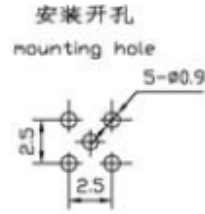
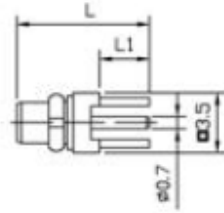


产品型号	电缆型号	D	备注
MMCX-K2	SFF-50-1 RG178	0.9	压接尾中部打 $\varnothing 1.5$ 焊线孔
MMCX-K3	SFF-50-1.5-1 RG316/U	1.6	

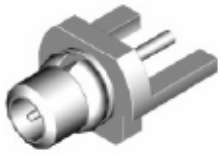
MMCX-K2



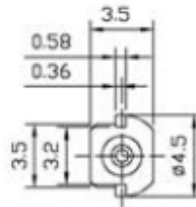
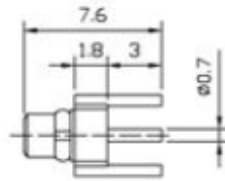
MMCX-JHD



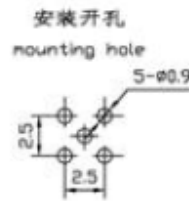
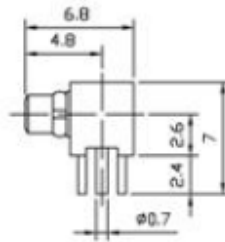
产品型号	备注	
	L	L1
MMCX-JHD	7.7	2.9
MMCX-JHD1	8.7	3.9



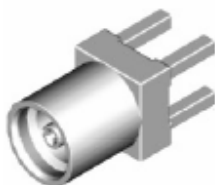
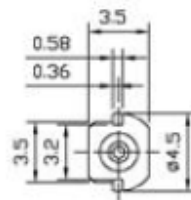
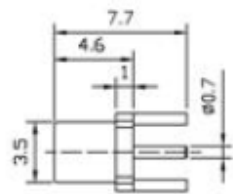
MMCX-JHD2



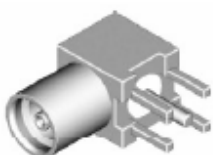
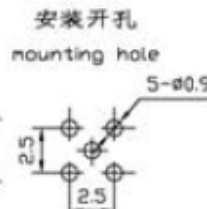
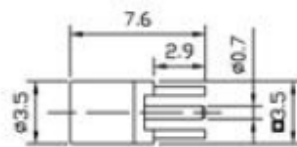
MMCX-JWHD



MMCX-KHD1



MMCX-KHD2



MMCX-KWHD

