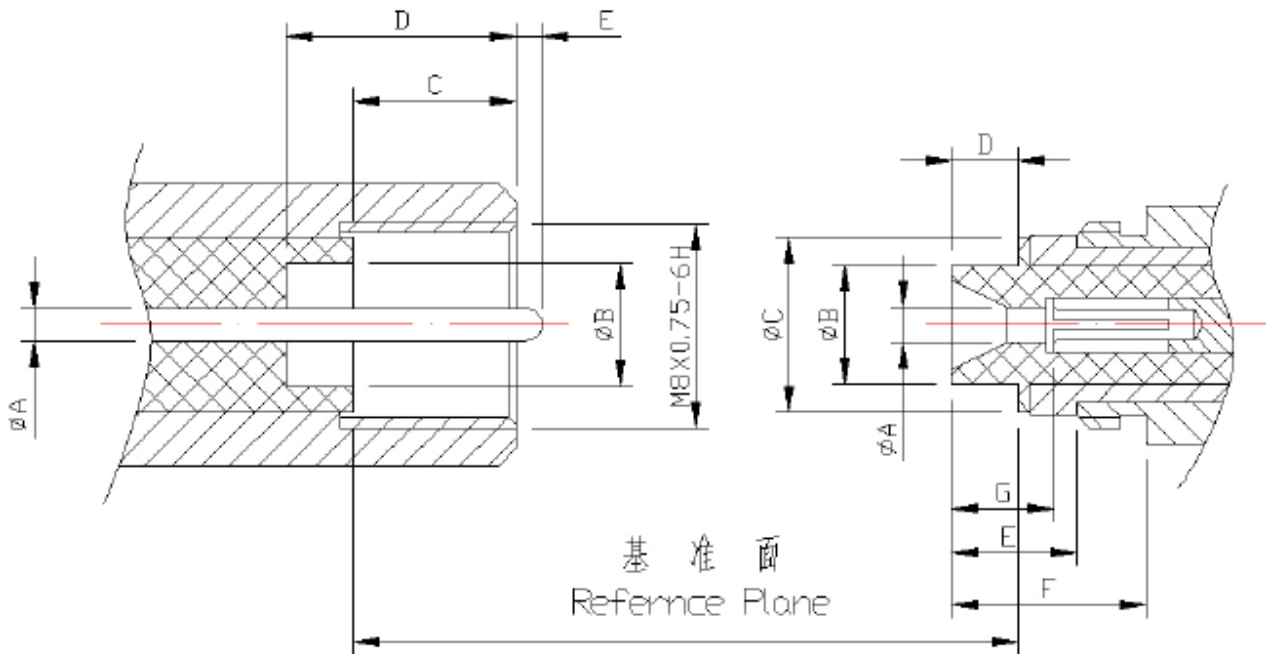


FME(SAP) 用于移动天线系统及其它通讯领域，作为信号传输连接射频同轴电缆之用，具有准确的 50 Ω 特性阻抗、最小的衰减及低成本特点。

FME(SAP) connectors are used for mobile antenna applications. These products distinguish themselves by an exact 50 ohm characteristic, minimum attenuation, correct pass accuracy and low cost.



界面尺寸 Interface Mating Dimensions

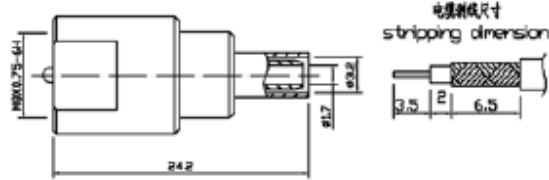


| | PLUG (mm) | |
|---|-----------|------|
| | MIN | MAX |
| A | 1.25 | |
| B | 4.70 | |
| C | 6.40 | |
| D | 9.00 | |
| E | 0.00 | 1.00 |

| | JACK (mm) | |
|---|-----------|------|
| | MIN | MAX |
| A | | 1.35 |
| B | | 4.60 |
| C | | 6.80 |
| D | | 2.60 |
| E | 4.90- | |
| F | 7.60 | |
| G | 4.00 | 5.00 |

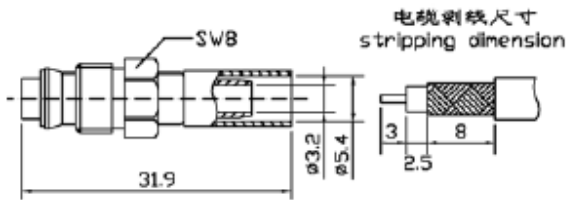
主要技术特性 Technical Characteristics:

| | | |
|---|---|-------|
| 环境温度范围 Temperature range | -65~+155℃ | |
| 电气性能 Electrical Characteristics | | |
| 特征阻抗 Characteristic impedance | 50Ω | |
| 工作电压 Working voltage | 250V max(有效值) | |
| 频率范围 Frequency range | 0~3GHz | |
| 介质耐压 Dielectric withstanding voltage | 海平面 at sea level: 500V(volts RMS) | |
| 接触电阻 Contact resistance | 内导体 center contact | ≤10mΩ |
| | 外导体 Outer contact | ≤5mΩ |
| 绝缘电阻 Insulation resistance | ≥5000MΩ | |
| 电压驻波比 VSWR | ≤1.20 (Straight) ≤1.25 (Right angle) | |
| 材料与涂覆 Mechanical Characteristics | | |
| 壳体和其他金属零件 Body or other metallic parts | 黄铜镀金 Brass, gold plated 不锈钢, 钝化或镀金 stainless, steel passivity or gold plated | |
| 插针 Male center contacts: | 黄铜镀金 Brass, gold plated | |
| 插孔 Female center contacts: | 铍青铜镀金 Beryllium copper, gold plated | |
| 绝缘体 Insulators: | 聚四氟乙烯 PTFE | |
| 密封件 Sealing washer | 硅橡胶 Silicone rubber | |
| 连接器机械耐久性 Connector durability | 500 次 Cycles | |



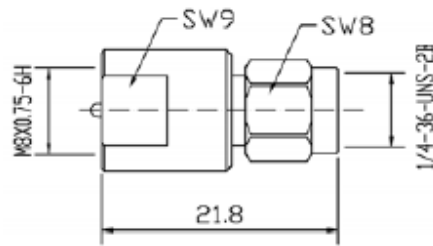
| 产品型号 | 电缆型号 | 备注 |
|---------|-----------|----|
| FME-J3Y | K-LMR-100 | |

FME-J3Y

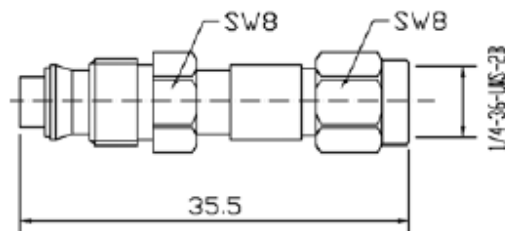


| 产品型号 | 电缆型号 | 备注 |
|---------|--------|----|
| FME-K5Y | RG58/U | |

FME-K5Y



FME/SMA-JJ



FME/SMA-KJ