

These quality connectors and additional supporting elements are the result of decades of experience. The whole range is designed to withstand severe environmental conditions. Precise manufacturing enables solid connections and low intermodulation (IMD) products.

The EIA family of coaxial connectors are available in 7/8", 1 5/8", 3 1/8", 4 1/2" and 6 1/8", all of which are suitable for RF applications. They support cables with foam dielectric and air-dielectric cables.

Connectors are delivered with an added inner conductor, and most are 'straight type' connectors.

Supporting elements such as couplings, gas barriers and gas inlet valves are also available for a complete installation solution.

technical data

| | |
|--------------------------|--|
| Impedance | 50 Ohm |
| Dielectric | PTFE |
| Body | CuZn |
| Contacts | CuBe, CuSn |
| Surface finish | Contacts - silver or gold plated Body - nickel or silver plated |
| Temperature range | from - 65°C to +165°C (Climate category according IEC 6855/155/56) |

dimensions of the coaxial lines

| STANDARD | | DIMENSIONS (mm) | | | | fc (GHz) Z = 50 Ohms |
|----------|--------|-----------------|--------|-------|-------|-------------------------|
| 339 IEC | EIA | A | B | C | D | |
| 50-22 | 7/8" | 22,23 | 19,95 | 8,70 | 7,40 | 6,68 |
| 50-40 | 1 5/8" | 41,30 | 38,90 | 16,90 | 15,00 | 3,43 |
| 50-80 | 3 1/8" | 79,40 | 76,90 | 33,40 | 31,30 | 1,73 |
| 50-105 | 4 1/2" | 106,00 | 103,00 | 44,80 | 42,80 | 1,29 |
| 50-155 | 6 1/8" | 156,00 | 152,00 | 66,04 | 64,01 | 0,87 |



This charts will help you find the product you are looking for.

| | |
|----------------------|---------------|
| RG 213/U RG 214/U | CEL 50-22-081 |
| RG 177/U RG 218/U | CEL 50-22-071 |

| | | |
|-------------|---|---|
| foam 1/2" | CEL 50-22-816 CEL 50-22-818 | CEL 50-40-820 |
| foam 7/8" | CEL 50-22-827 CEL 50-22-827/ RFS-JA | CEL 50-40-828 CEL 50-40-828/ RFS-JA |
| foam 1 5/8" | CEL 50-22-835 | CEL 50-40-836 |

Foam cables are suitable for following manufacturers:

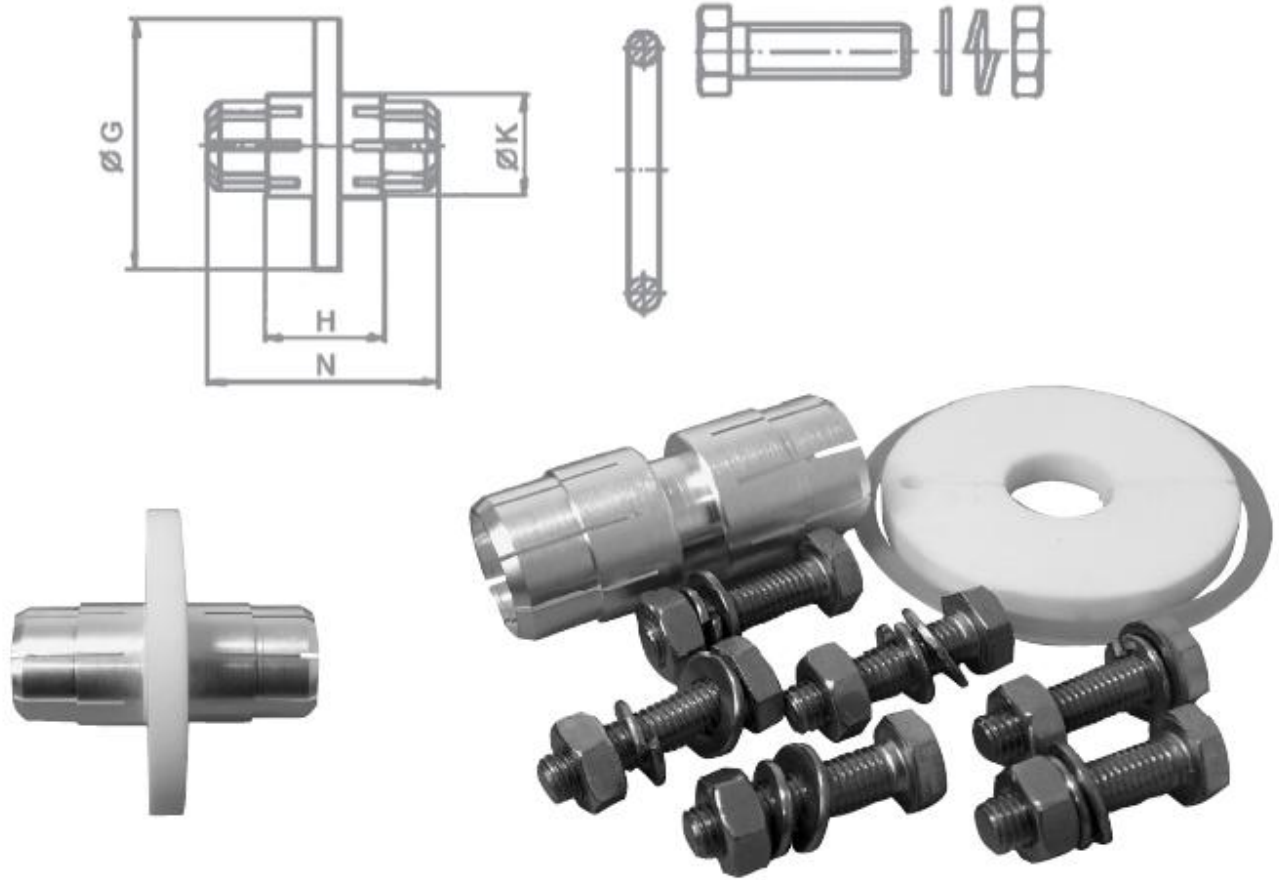
- Andrew
- RFS
- Dielectric
- SUHNER
- EUPEN
- Noklan

| | | | | | |
|------------|---|---------------|---------------|----------------|----------------|
| air 3/8" | CEL 50-22-696 CEL 50-22-697 CEL 50-22-698 | | | | |
| air 5/8" | CEL 50-22-687 | | | | |
| air 7/8" | CEL 50-22-677 | CEL 50-40-678 | | | |
| air 1 1/8" | CEL 50-22-667 | CEL 50-40-668 | | | |
| air 1 5/8" | CEL 50-22-657 | CEL 50-40-658 | CEL 50-80-659 | | |
| air 3 1/8" | | CEL 50-40-641 | CEL 50-80-642 | CEL 50-105-643 | |
| air 4 1/8" | | | CEL 50-80-701 | CEL 50-105-702 | CEL 50-155-703 |
| air 5" | | | | CEL 50-105-707 | CEL 50-155-709 |
| air 6 1/8" | | | | | CEL 50-155-712 |

Air-dielectric cables are suitable for following manufacturers:

- Andrew
- RFS
- SUHNER
- EUPEN
- Noklan

SHORT COUPLING ELEMENTS WITH GASKETS AND SCREWS

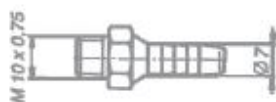


CEL 50-80-620

| STANDARD | | TYPE | CODE | DIMENSIONS (mm) | | | | FLANGE SCREWS | | | GASKETS |
|----------|--------|----------------|-------|-----------------|------|------|-----|---------------|-------|----|-----------|
| 339 IEC | EIA | | | G | H | K | N | No. | screw | L | |
| 50-22 | 7/8" | CEL 50-22-616 | 64521 | 20,7 | 23,9 | 8,66 | 49 | 3 | M6 | 30 | 27 x 3,2 |
| 50-40 | 1 5/8" | CEL 50-40-618 | 64531 | 41,8 | 28,5 | 16,9 | 58 | 4 | M8 | 35 | 47 x 5,4 |
| 50-80 | 3 1/8" | CEL 50-80-620 | 64533 | 81,3 | 45,0 | 33,4 | 80 | 6 | M10 | 40 | 85 x 5,4 |
| 50-105 | 4 1/2" | CEL 50-105-622 | 64535 | 105,5 | 45,0 | 44,8 | 80 | 8 | M10 | 40 | 110 x 6,0 |
| 50-155 | 6 1/8" | CEL 50-155-624 | 65384 | 154,0 | 63,0 | 66,0 | 108 | 12 | M12 | 45 | 159 x 7,0 |
| 75-80 | 3 1/8" | CEL 75-80-620 | 63934 | 81,3 | 45 | 21,8 | 80 | 6 | M10 | 40 | 85 x 5,4 |
| 50-125 | 5" | CEL 50-125-624 | 53968 | 124 | 46 | 52 | 120 | 8 | M10 | 40 | 128 x 6 |

GAS INLET VALVES

CODE 65531



CODE 65532



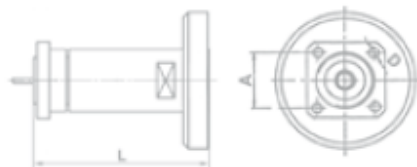
CODE 68220



CODE 70032



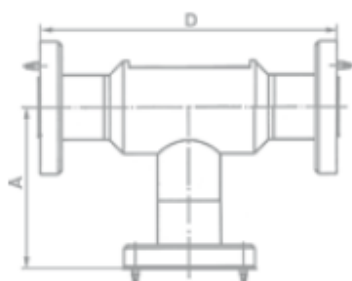
PANEL CONNECTORS



CEL 50-22-051

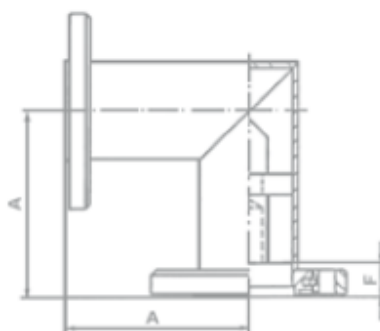
| STANDARD | | TYPE | CODE | DIMENSIONS (mm) | | |
|----------|--------|----------------------|-------|-----------------|------|-------|
| 339 IEC | EIA | | | A | D | L |
| 50-22 | 7/8" | CEL 50-22-051 | 82182 | 24,75 | 3,60 | 71,00 |
| 50-40 | 1 5/8" | CEL 50-40-052 | 82183 | 45,20 | 4,80 | 75,00 |

IN-SERIES T ADAPTER



| STANDARD | | TYPE | CODE | DIMENSIONS (mm) | |
|----------|------|----------------------|-------|-----------------|-----|
| 339 IEC | EIA | | | A | L |
| 50-22 | 7/8" | CEL 50-22-076 | 19973 | 63 | 140 |

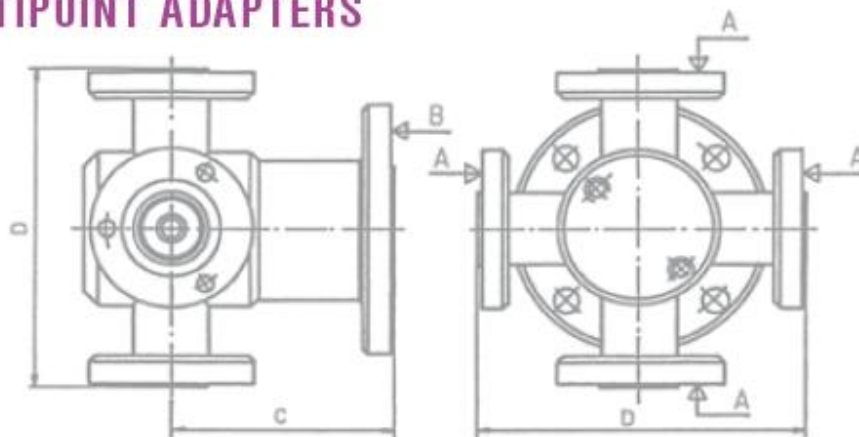
ELBOW ADAPTERS



CEL 50-40-957

| STANDARD | | FIXED FLANGES | | DIMENSIONS (mm) | |
|----------|--------|-----------------------|-------|-----------------|------|
| 339 IEC | EIA | TYPE | CODE | A | F |
| 50-22 | 7/8" | CEL 50-22-949 | 64578 | 58 | 12,7 |
| 50-40 | 1 5/8" | CEL 50-40-957 | 92492 | 84 | 15,8 |
| 50-80 | 3 1/8" | CEL 50-80-967 | 73130 | 100 | 23,8 |
| 50-105 | 4 1/2" | CEL 50-105-972 | 83261 | 125 | 23,8 |
| 50-155 | 6 1/8" | CEL 50-155-976 | 45281 | 150 | 32,5 |

MULTIPOINT ADAPTERS

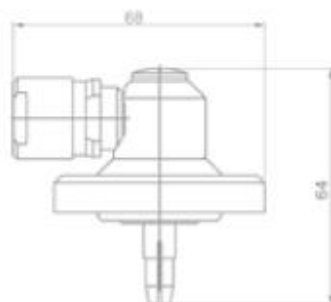


CEL 50-22-40-563

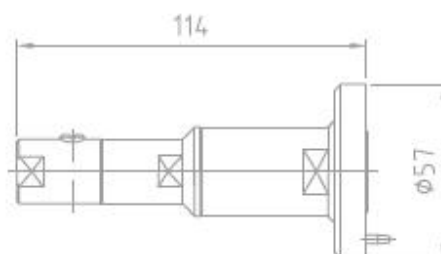
| STANDARD | | TYPE | CODE | DIMENSIONS (mm) | |
|----------------|------------|--------------------------|-------|-----------------|-----|
| A | B | | | C | D |
| 2 x EIA 7/8" | EIA 7/8" | CEL 50-22-943 | 83266 | 65 | 110 |
| 3 x EIA 7/8" | EIA 7/8" | CEL 50-22-944 | 83267 | 65 | 110 |
| 4 x EIA 7/8" | EIA 7/8" | CEL 50-22-945 | 83268 | 65 | 110 |
| 2 x EIA 7/8" | EIA 1 5/8" | CEL 50-22-40-561 | 83425 | 75 | 110 |
| 3 x EIA 7/8" | EIA 1 5/8" | CEL 50-22-40-562 | 83426 | 75 | 110 |
| 4 x EIA 7/8" | EIA 1 5/8" | CEL 50-22-40-563 | 83427 | 75 | 110 |
| 2 x EIA 1 5/8" | EIA 1 5/8" | CEL 50-40-942 | 92162 | 65 | 130 |
| 2 x EIA 1 5/8" | EIA 3 1/8" | CEL 50-40-80-565 | 79883 | 75 | 150 |
| 3 x EIA 1 5/8" | EIA 3 1/8" | CEL 50-40-80-566 | 83428 | 75 | 150 |
| 4 x EIA 1 5/8" | EIA 3 1/8" | CEL 50-40-80-567 | 83430 | 75 | 150 |
| 2 x EIA 3 1/8" | EIA 6 1/8" | CEL 50-80-155-573 | 95201 | on request | |
| 3 x EIA 3 1/8" | EIA 6 1/8" | CEL 50-80-155-574 | 95202 | on request | |
| 4 x EIA 3 1/8" | EIA 6 1/8" | CEL 50-80-155-575 | 95203 | on request | |

CABLE CONNECTORS, CLAMP, 339 IEC 50-22 (EIA 7/8")

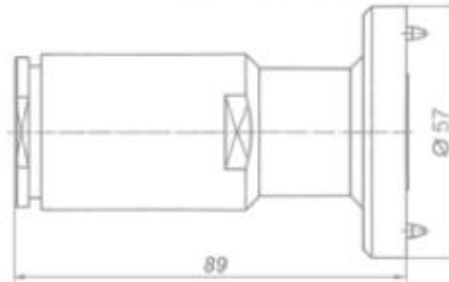
TYPE **CEL 50-22-081**
CODE 60326
WEIGHT 307 g
CABLE TYPE RG 213/U, RG 214/U
REMARK Inner conductor mounted, combination system



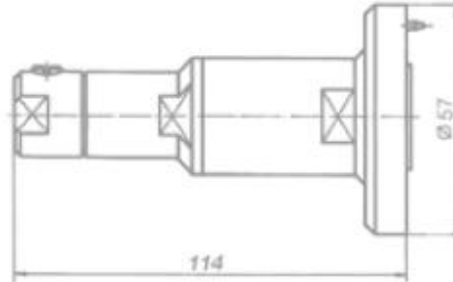
TYPE **CEL 50-22-699**
CODE 52354
WEIGHT 456 g
CABLE TYPE RFF 1/2"-50, CELLFLEX SCF 12-50
REMARK Inner conductor added



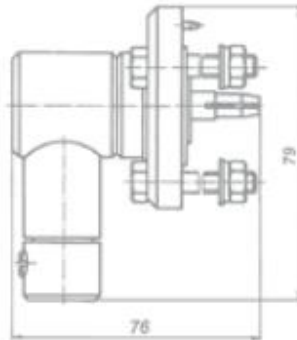
TYPE CEL 50-22-071
CODE 60157
WEIGHT 523 g
CABLE TYPE RG 177/U, RG 218/U
REMARK Inner conductor added



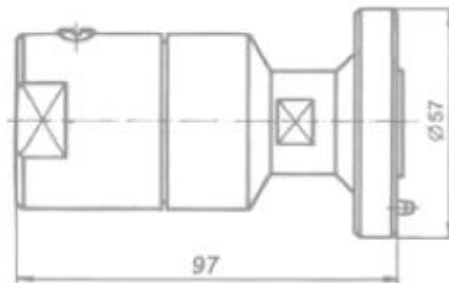
TYPE CEL 50-22-816
CODE 64511
WEIGHT 382 g
CABLE TYPE CELLFLEX LCF 12-50, HELIAX LDF4-50A, RF 1/2"-50, SUCOFEEED 1/2", EUPEN - 5128
REMARK Inner conductor added



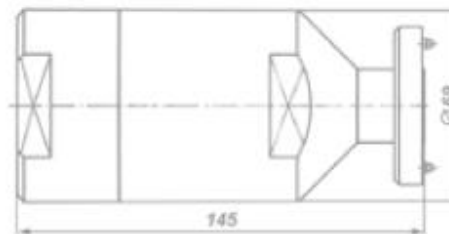
TYPE CEL 50-22-818
CODE 64513
WEIGHT 444 g
CABLE TYPE CELLFLEX LCF 12-50, HELIAX LDF4-50A, RF 1/2"-50, SUCOFEEED 1/2", EUPEN - 5128
REMARK Inner conductor mounted.
 Right angle connector.



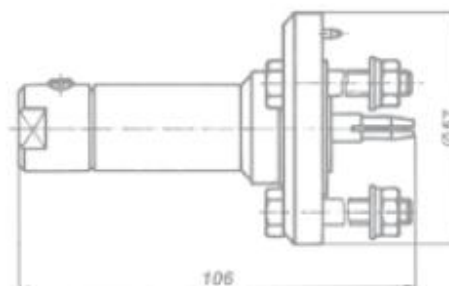
TYPE 1 CEL 50-22-827 and
CODE 1 66328
TYPE 2 CEL 50-22-827/RFS-JA
CODE 2 66333
WEIGHT 445 g
CABLE TYPE CEL 50-22-827 for cables HELIAX LDF5-50A, RF 7/8"-50, SUCOFEEED 7/8", EUPEN - 5228
 CEL 50-22-827/RFS-JA only for CELLFLEX LCF 78-50



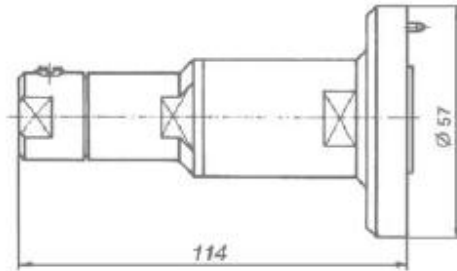
TYPE CEL 50-22-835
CODE 68278
WEIGHT 2.135 g
CABLE TYPE CELLFLEX LCF 158-50, HELIAX LDF7-50A, RF 1 5/8"-50, SUCOFEEED 1 5/8", EUPEN - 5438
REMARK Inner conductor added



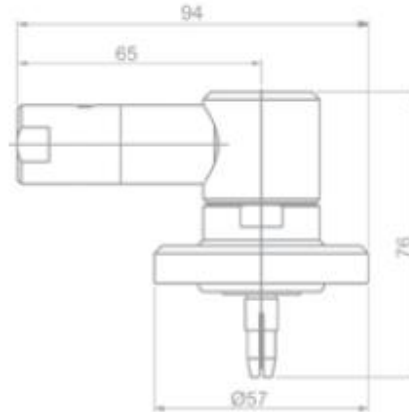
TYPE CEL 50-22-696
CODE 70117
WEIGHT 356 g
CABLE TYPE HELIFLEX HCA 38-50
REMARK Inner conductor mounted



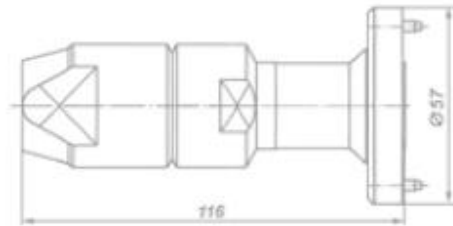
TYPE CEL 50-22-697
CODE 64943
WEIGHT 398 g
CABLE TYPE HELIFLEX HCA 38-50
REMARK Inner conductor added



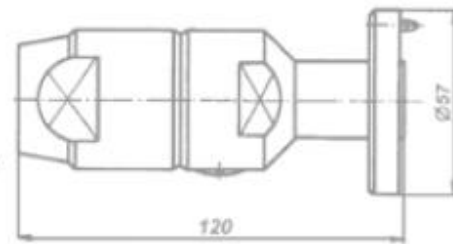
TYPE CEL 50-22-698
CODE 99677
WEIGHT 456 g
CABLE TYPE HELIFLEX HCA 38-50
REMARK Inner conductor mounted.
 Right angle connector.



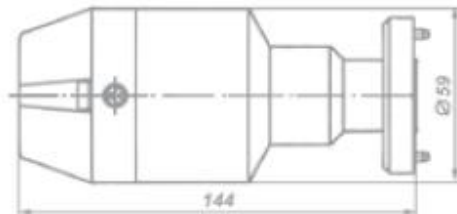
TYPE CEL 50-22-687
CODE 64645
WEIGHT 557 g
CABLE TYPE HELIFLEX HCA 58-50,
 HELIAX HJ4.5-50
REMARK Inner conductor added.
 Connector with gas barrier and
 gas inlet valve M10 x 0,75



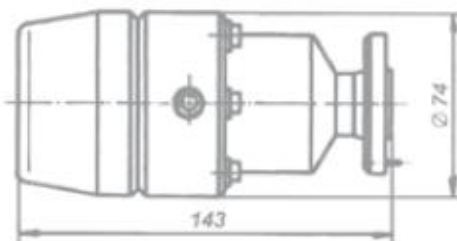
TYPE CEL 50-22-677
CODE 64643
WEIGHT 811 g
CABLE TYPE HELIFLEX HCA 78-50, HELIAX HJ5-51
REMARK Inner conductor added.
 Connector with gas barrier and
 gas inlet valve M10 x 0,75



TYPE CEL 50-22-667
CODE 84469
WEIGHT 1.622 g
CABLE TYPE HELIFLEX HCA 118-50
REMARK Inner conductor added.
 Connector with gas barrier and
 gas inlet valve M12 x 1,5

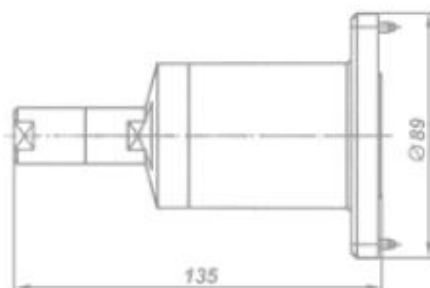


TYPE CEL 50-22-657
CODE 64358
WEIGHT 2.210 g
CABLE TYPE HELIFLEX HCA 158-50
REMARK Inner conductor added.
 Connector with gas barrier and
 gas inlet valve M12 x 1,5

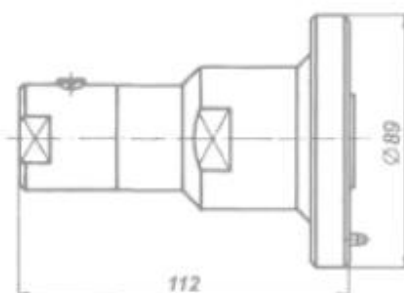


CABLE CONNECTORS, CLAMP, 339 IEC 50-40 (EIA 1 5/8")

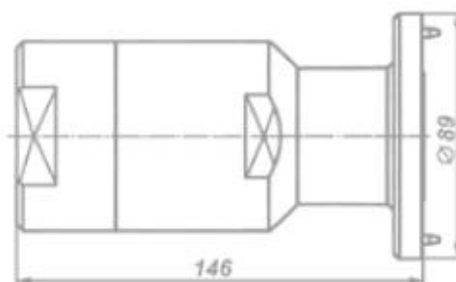
TYPE CEL 50-40-820
CODE 76810
WEIGHT 1.110 g
CABLE TYPE CELLFLEX LCF 12-50,
 HELIAX LDF4-50A, RF 1/2"-50,
 SUCOFEEED 1/2", EUPEN - 5128
REMARK Inner conductor added



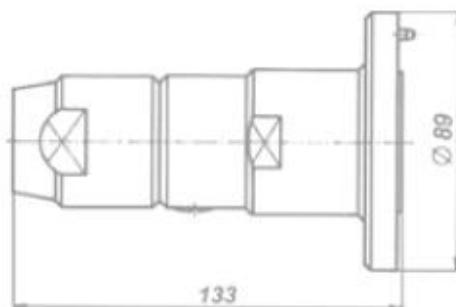
TYPE 1 CEL 50-40-828 and
CODE 1 66331
TYPE 2 CEL 50-40-828/RFS-JA
CODE 2 66336
WEIGHT 868 g
CABLE TYPE CEL 50-40-828 for cables
 HELIAX LDF5-50A, RF 7/8"-50,
 SUCOFEEED 7/8", EUPEN - 5228
 CEL 50-40-828/RFS-JA
 only for CELLFLEX LCF 78-50



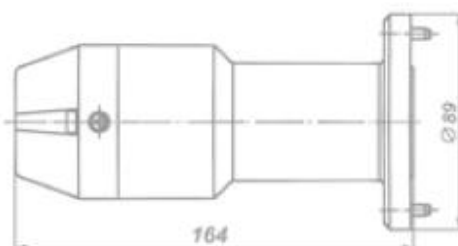
TYPE CEL 50-40-836
CODE 67301
WEIGHT 2.227 g
CABLE TYPE CELLFLEX LCF 158-50,
 HELIAX LDF7-50A, RF 1 5/8"-50,
 SUCOFEEED 1 5/8", EUPEN - 5438
REMARK Inner conductor added



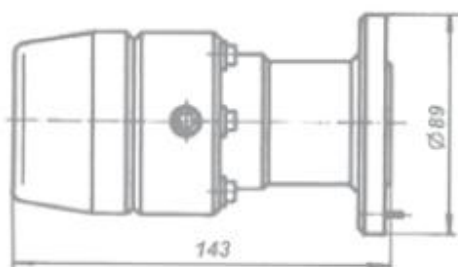
TYPE CEL 50-40-678
CODE 66330
WEIGHT 1.250 g
CABLE TYPE HELIFLEX HCA 78-50,
 HELIAX HJ5-50
REMARK Inner conductor added.
 Connector with gas barrier and
 gas inlet valve M10 x 0,75



TYPE CEL 50-40-668
CODE 64941
WEIGHT 2.200 g
CABLE TYPE HELIFLEX HCA 118-50
REMARK Inner conductor added.
 Connector with gas barrier and

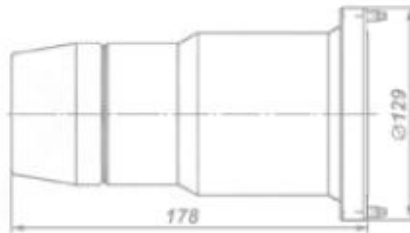


TYPE CEL 50-40-658
CODE 64203
WEIGHT 2.477 g
CABLE TYPE HELIFLEX HCA 158-50
REMARK Inner conductor added.
 Connector with gas barrier and
 gas inlet valve M12 x 1,5

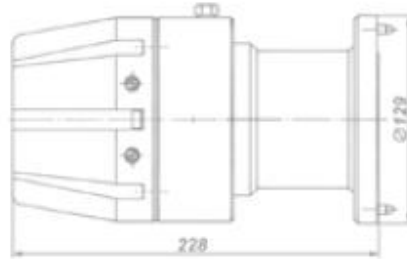


CABLE CONNECTORS, CLAMP, 339 IEC 50-80 (EIA 3 1/8")

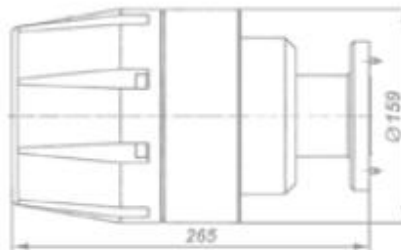
TYPE CEL 50-80-659
CODE 66244
WEIGHT 3.670 g
CABLE TYPE HELIFLEX HCA 158-50
REMARK Inner conductor added.
 Connector with gas barrier and
 gas inlet valve M12 x 1,5



TYPE CEL 50-80-642
CODE 64942
WEIGHT 9.600 g
CABLE TYPE HELIFLEX HCA 318-50
REMARK Inner conductor added.
 Connector with gas barrier and
 gas inlet valve M12 x 1,5

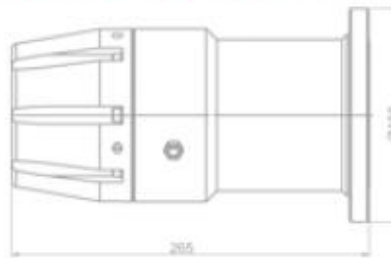


TYPE CEL 50-80-701
CODE 72477
WEIGHT 14.100 g
CABLE TYPE HELIFLEX HCA 418-50
REMARK Inner conductor added.
 Connector with gas barrier and gas
 inlet valves M12 x 1,5 and M18 x 1,5

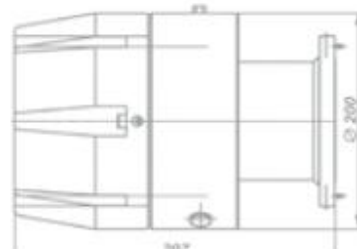


CABLE CONNECTORS, CLAMP, 339 IEC 50-105 (EIA 4 1/2")

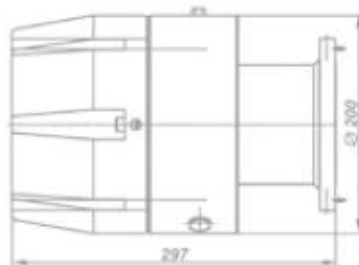
TYPE CEL 50-105-643
CODE 98287
WEIGHT 11.000 g
CABLE TYPE HELIFLEX HCA 318-50
REMARK Inner conductor added.
 Connector with gas barrier and gas
 inlet valves M12 x 1,5



TYPE CEL 50-105-702
CODE 64944
WEIGHT 14.600 g
CABLE TYPE HELIFLEX HCA 418-50
REMARK Inner conductor added.
 Connector with gas barrier and
 gas inlet valves M12 x 1,5 and M18 x 1,5

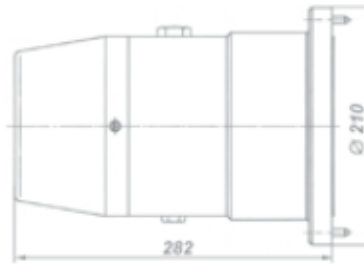


TYPE CEL 50-105-707
CODE 82494
WEIGHT 15.500 g
CABLE TYPE HELIFLEX HCA 500-50
REMARK Inner conductor added.
 Connector with gas barrier and
 gas inlet valves M12 x 1,5 and M18 x 1,5

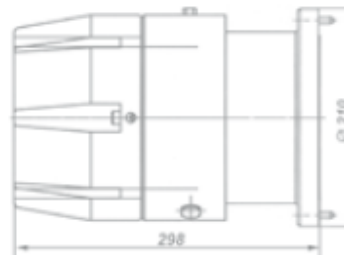


CABLE CONNECTORS, CLAMP, 339 IEC 50-155 (EIA 6 1/8")

TYPE CEL 50-155-703
CODE 74745
WEIGHT 15.900 g
CABLE TYPE HELIFLEX HCA 418-50
REMARK Inner conductor added.
 Connector with gas barrier and
 gas inlet valves M12 x 1,5 and M18 x 1,5



TYPE CEL 50-155-709
CODE 82495
WEIGHT 17.500 g
CABLE TYPE HELIFLEX HCA 500-50
REMARK Inner conductor added.
 Connector with gas barrier and
 gas inlet valves M12 x 1,5 and M18 x 1,5



TYPE CEL 50-155-712
CODE 66447
WEIGHT 19.800 g
CABLE TYPE HELIFLEX HCA 618-50
REMARK Inner conductor added.
 Connector with gas barrier and
 gas inlet valves M12 x 1,5 and M18 x 1,5

