

2.4mm precision connectors are suitable for frequency up to 50GHz. They are especially suitable for use with semi-rigid cables and microwave components.

Key performance

Characteristic Impedance : 50Ω

Frequency range : 0~50GHz

Contact resistance :

Center conductor $\leq 2.0m \Omega$

Out conductor $\leq 2.0m \Omega$

Insulation resistance : $\geq 5000M \Omega$

Insulator voltage withstanding : 500V

VSWR : 0~18.0GHz ≤ 1.15

18.0~26.5GHz ≤ 1.20

26.5~50GHz ≤ 1.30

Connector durability : 500 cycles

Applicable spec/std : IEC

Material

Center contacts:

Male---brass, gold plated.

Female---beryllium copper, gold plated

Bodies and other metal parts:

brass, gold plated

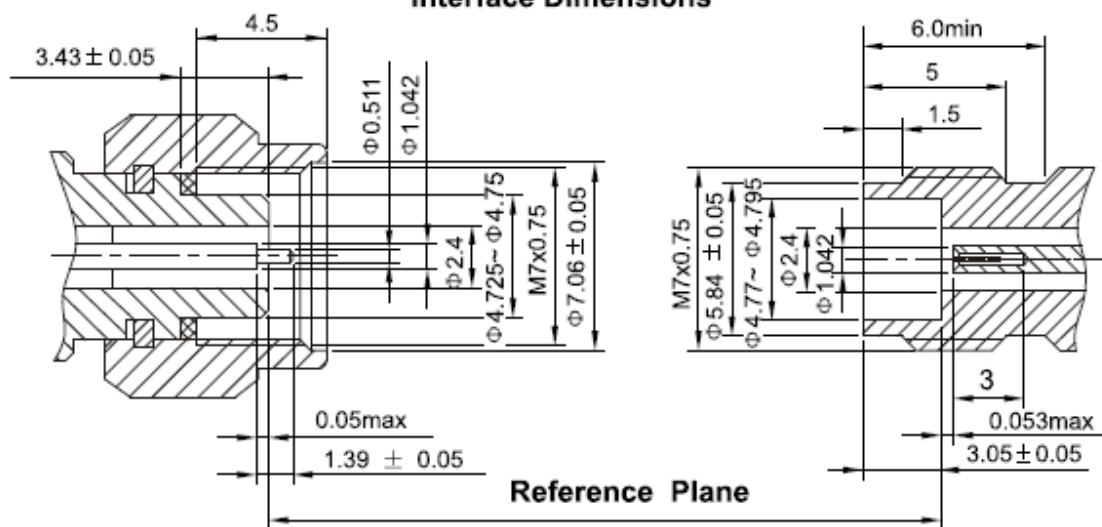
Insulators: Teflon

Crimp ferrule: copper, nickel plated.

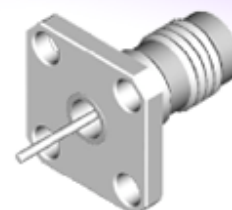
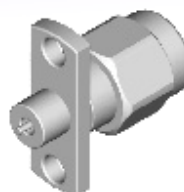
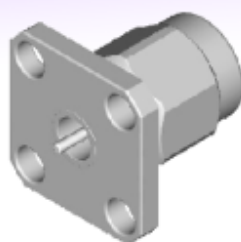
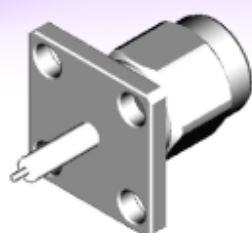
Gasket and seal rings: silicone rubber

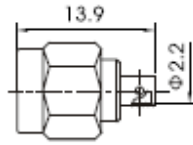
Heat-shrink tubing: thermofit plastic.

Interface Dimensions

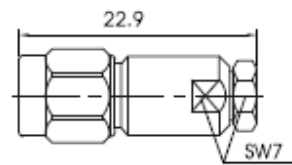


2.4 MM Connectors

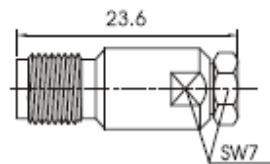




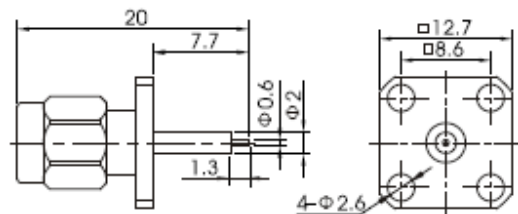
Type	part number	suitable cable	Note
2.4mm-JB2	1410-6600	B2	



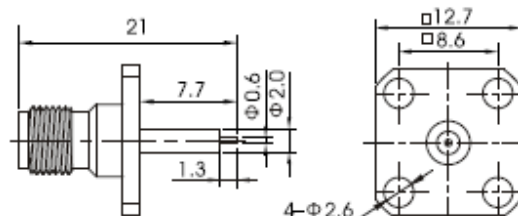
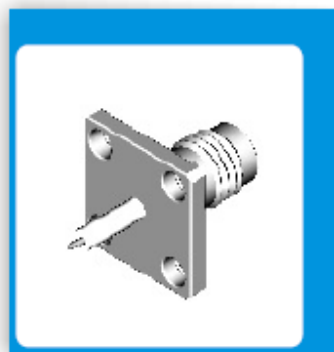
Type	part number	suitable cable	Note
2.4mm-JB2A	1410-6601	B2	



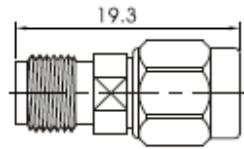
Type	part number	suitable cable	Note
2.4mm-KB2	1420-6600	B2	



Type	part number	suitable cable	Note
2.4mm-JFD	1410-0000		



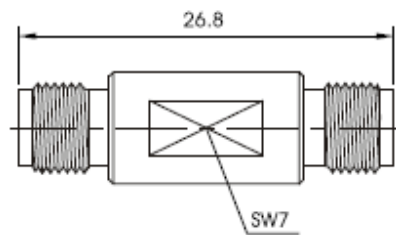
Type	part number	suitable cable	Note
2.4mm-KFD	1420-0000		



Type part number

Note

2.4mm-JK 1400-6900



Type part number

Note

2.4mm-KK 1400-6901